

POWER

	DISTRIBUTION PANELBOARD
	NEW PANELBOARD - SURFACE
	EXISTING PANELBOARD
	GENERATOR
	JUNCTION BOX
	JUNCTION BOX - CEILING
	BUS DUCT VERTICAL
	NON-FUSIBLE SAFETY SWITCH
	FUSIBLE SAFETY SWITCH
	MOTOR
	MOTOR STARTING SWITCH
	JUNCTION BOX FOR RANGE HOOD
	JUNCTION BOX FOR CONNECTION TO GARBAGE DISPOSAL
	PROJECTOR
	PROJECTION SCREEN
	DISHWASHER
	REMOTE SWITCH TO CONTROL PROJECTION SCREEN

RECEPTACLES

	SINGLE 125V-20A RECEPTACLE
	DUPLEX 125V-20A RECEPTACLE
	DUPLEX RECEPTACLE GROUND FAULT INTERRUPTER TYPE
	DUPLEX RECEPTACLE GROUND FAULT INTERRUPTER TYPE, INSTALL IN WEATHERPROOF HOUSING
	DOUBLE DUPLEX RECEPTACLE
	DUPLEX RECEPTACLE FOR MICROWAVE, MT, AS DIRECTED BY ARCHITECT
	RECEPTACLE ELECTRIC WATER COOLER
	SPECIAL RECEPTACLE - COORDINATE EXACT TYPE WITH EQUIPMENT AT SITE
	INDICATES MOUNT DEVICE ABOVE COUNTER TOP
	SURFACE STYLE POKE-THRU

NURSE CALL

	NURSE CALL SYSTEM ANNUCIATOR
	NURSE CALL - PUSH FOR HELP
	NURSE CALL SYSTEM EQUIPMENT CABINET

LIGHTING

	LIGHTING FIXTURE.
	LIGHTING FIXTURE WITH EMERGENCY DRIVER. SUBSCRIPT "NL" WHERE USED, INDICATES NIGHT LIGHT CONNECTED AHEAD OF LIGHTING CONTROLS.
	DOWNLIGHT FIXTURE.
	DOWNLIGHT FIXTURE. SUBSCRIPT "NL" WHERE USED, INDICATES NIGHT LIGHT CONNECTED AHEAD OF LIGHTING CONTROLS.
	WALL MOUNTED LIGHTING FIXTURE.
	WALL MOUNTED LIGHTING FIXTURE ON EMERGENCY CIRCUIT. SUBSCRIPT "NL" WHERE USED, INDICATES NIGHT LIGHT CONNECTED AHEAD OF LIGHTING CONTROLS.

LIGHTING FIXTURE KEY

	1. LETTER DENOTES FIXTURE TYPE. REFER TO LIGHTING FIXTURE SCHEDULE FOR DETAILS.
--	---

	EXIT SIGN - DIRECTIONAL ARROWS AS INDICATED ON DRAWINGS
	BATTERY PACK WITH HEADS AS INDICATED ON DRAWINGS
	REMOTE HEAD FOR BATTERY PACK
	3-WAY SWITCH
	DIMMER SWITCH
	CEILING MOUNTED OCCUPANCY SENSOR
	WALL MOUNTED OCCUPANCY SENSOR
	SMALL CASE LETTERS REPRESENTS LAMP(S) / SWITCHES. WHEN USED WITH AN OCCUPANCY SENSOR THIS INDICATES SENSOR WITH MANUAL OVERRIDE SWITCH
	LIGHTING RELAY CONTROLLER WITH POWER PACK

TELECOMMUNICATIONS

	TELEPHONE OUTLET(S) @ 18" AFF. U.N.O. WITH 3/4" RACEWAY TERMINATED ABOVE NEAREST ACCESSIBLE CEILING OR TO TELEPHONE TERMINAL BOARD IF NO ACCESSIBLE CEILING AVAILABLE.
	DATA OUTLET(S) @ 18" AFF. U.N.O. WITH 3/4" RACEWAY TERMINATED ABOVE NEAREST ACCESSIBLE CEILING OR TO TELEPHONE TERMINAL BOARD IF NO ACCESSIBLE CEILING AVAILABLE.
	COMBINATION TELEPHONE/DATA OUTLET(S) @ 18" AFF. U.N.O. WITH 1" RACEWAY TERMINATED ABOVE NEAREST ACCESSIBLE CEILING OR TO TELE/DATA TERMINAL AREA IF NO ACCESSIBLE CEILING AVAILABLE.

SECURITY & DOOR CONTROL

	SECURITY SYSTEM CONTROL PANEL
	SECURITY CAMERA
	SECURITY CAMERA IN BUBBLE

FIRE ALARM:

	FIRE ALARM CONTROL PANEL, SURFACE MOUNTED, TOP 5'-9" AFF. UON.
	FIRE ALARM ANNUNCIATOR PANEL, RECESSED, TOP 5'-9" AFF. UON.
	FIRE ALARM TRANSPONDER PANEL, SURFACE MOUNTED, TOP 5'-9" AFF. UON.
	FIRE ALARM NOTIFICATION APPLIANCE CIRCUIT EXTENDER PANEL, SURFACE MOUNTED, TOP 5'-9" AFF. UON.
	AUTOMATED DIALER COMMUNICATOR, SURFACE MOUNTED, TOP 5'-9" AFF. UON.
	ANSUL SYSTEM, FURNISHED BY KITCHEN EQUIPMENT CONTRACTOR, PROVIDE CONNECTION FOR POWER AND FIRE ALARM SYSTEM AS REQUIRED.
	ZONE ADDRESSABLE MODULE.
	CONTROL MODULE RELAY.
	MONITOR INPUT MODULE.
	FIRE ALARM MANUAL PULL STATION, 42" AFF TO ACTUATING ARM.
	FIRE ALARM MANUAL PULL STATION, WEATHERPROOF, 42" AFF TO ACTUATING ARM. PULL STATION SHALL BE RATED FOR WET LOCATIONS AND COLD TEMPERATURES.
	FIRE ALARM SYSTEM PHOTO-ELECTRIC SMOKE DETECTOR, CEILING MOUNTED.
	FIRE ALARM SYSTEM DUCT MOUNTED PHOTO-ELECTRIC SMOKE DETECTOR, CEILING MOUNTED.
	FIRE ALARM SYSTEM ADDRESSABLE HEAT DETECTOR, FIXED TEMPERATURE/RATE OF RISE TYPE, CEILING MOUNTED.
	FIRE ALARM SYSTEM SPEAKER, CEILING MOUNTED, RECESSED.
	FIRE ALARM SYSTEM SPEAKER/STROBE, CEILING MOUNTED, RECESSED. SUBSCRIPT INDICATES MINIMUM CANDELA RATING.
	FIRE ALARM SYSTEM VISUAL (STROBE) APPLIANCE, CEILING MOUNTED. SUBSCRIPT INDICATES MINIMUM CANDELA RATING.
	FIRE ALARM SYSTEM AUDIO/VISUAL (HORN/STROBE) APPLIANCE, CEILING MOUNTED. SUBSCRIPT INDICATES MINIMUM CANDELA RATING.
	FIRE ALARM SYSTEM SPEAKER, WALL MOUNTED 80" AFF. OR 6" BELOW FINISHED CEILING, WHICHEVER IS LOWER, UON.
	FIRE ALARM SYSTEM SPEAKER/STROBE, WALL MOUNTED 80" AFF. OR 6" BELOW FINISHED CEILING, WHICHEVER IS LOWER, UON. SUBSCRIPT INDICATES MINIMUM CANDELA RATING.
	FIRE ALARM SYSTEM VISUAL (STROBE) APPLIANCE, WALL MOUNTED 80" AFF. OR 6" BELOW FINISHED CEILING, WHICHEVER IS LOWER, UON. SUBSCRIPT INDICATES MINIMUM CANDELA RATING.
	FIRE ALARM SYSTEM AUDIO/VISUAL (HORN/STROBE) APPLIANCE, WALL MOUNT 80" AFF OR 6" BELOW FINISHED CEILING, WHICHEVER IS LOWER. SUBSCRIPT INDICATES MINIMUM CANDELA RATING.
	SPRINKLER SYSTEM SUPERVISORY VALVE TAMPER SWITCH CONNECTION.
	SPRINKLER SYSTEM SUPERVISORY VALVE FLOW SWITCH CONNECTION.
	SPRINKLER SYSTEM PRESSURE SWITCH CONNECTION.
	SPRINKLER SYSTEM LOW/HIGH AIR PRESSURE SWITCH CONNECTION.
	FIREMAN'S TELEPHONE JACK, MOUNT 48" AFF. UON.
	FIRE ALARM MAGNETIC DOOR HOLD OPEN DEVICE, POWERED THROUGH FIRE ALARM SYSTEM. COORDINATE MOUNTING HEIGHT WITH ASSOCIATED DOOR MOUNTED DEVICE.
	SMOKE DAMPER OR FIRE/SMOKE DAMPER CONNECTION.
	SPRINKLER SYSTEM BELL ALARM APPLIANCE, WEATHERPROOF. MOUNT 80" AFG.
	AREA OF RESCUE SYSTEM - MASTER STATION
	AREA OF RESCUE SYSTEM - SIGNAGE
	AREA OF RESCUE SYSTEM - SLAVE STATION

MISCELLANEOUS

	HOMERUN BACK TO PANEL.
	HOMERUN IN FLOOR SLAB OR BELOW GRADE BACK TO PANEL.
	#12 AWG BRANCH CIRCUIT WIRING IN 3/4" CONDUIT CONCEALED IN WALLS OR ABOVE CEILING.
	#10 AWG BRANCH CIRCUIT WIRING IN 3/4" CONDUIT CONCEALED IN WALLS OR ABOVE CEILING.
	BRANCH CIRCUIT WIRING IN FLOOR SLAB OR BELOW GRADE.
	INDICATES CONTINUATION OF LINE
	CONDUIT TURNED DOWN
	CONDUIT TURNED UP
	LOW VOLTAGE WIRING AND CONDUIT

ABBREVIATIONS

ADM	ADMINISTRATOR
AFF	ABOVE FINISHED FLOOR
C	CEILING MOUNTED
DM	DEMOLISHED
E	EMERGENCY
EC	ELECTRICAL CONTRACTOR
EWC	ELECTRIC WATER COOLER
F	FIRE ALARM
FSS	FUSED SAFETY SWITCH
G	GROUND FAULT INTERRUPTER
GC	GENERAL CONTRACTOR
M	MOTOR
MC	MECHANICAL CONTRACTOR
MW	MICROWAVE
N	NURSE CALL
PR	PRESENT TO REMAIN
PRN	PRESENT LOCATION/ REPLACED WITH NEW
REF	REFRIGERATOR
REL	RELOCATE
W	WALL MOUNTED
WP	WEATHERPROOF
XR	EXISTING TO REMAIN

EXISTING CONDITIONS/DEMOLITION NOTES:

- CONDUITS & WIRING REQUIRED FOR THE CONTINUITY OF LIGHTING, OUTLETS, SYSTEMS AND EQUIPMENT THAT IS TO REMAIN SHALL REMAIN UNDISTURBED OR SHALL BE RECONNECTED BY THE CONTRACTOR AS REQUIRED TO MAINTAIN SERVICE. THIS WORK SHALL BE COMPLETED AT NO ADDITIONAL COST TO THE OWNER.
- ALL DIMENSIONS AND EXISTING CONDITIONS SHALL BE CHECKED AND VERIFIED AT THE SITE BY THE ELECTRICAL CONTRACTOR, PRIOR TO BIDS.
- WHERE EXISTING ELECTRICAL EQUIPMENT IS DESIGNATED TO BE REMOVED, THE EC SHALL REMOVE THE EQUIPMENT AND AND ALL ASSOCIATED WIRING AND CONDUITS BACK TO THE SERVICE POINT.
- WHERE EXISTING ELECTRICAL EQUIPMENT IS DESIGNATED TO BE RELOCATED, THE EC SHALL RELOCATE THE EQUIPMENT AS SHOWN ON THE PLANS AND RECONNECT THE EQUIPMENT AS REQUIRED TO MAINTAIN SERVICE. PATCH ALL OPENINGS IN THE WALL, CEILINGS, OR FLOORS CREATED BY THE DEMOLITION WORK.
- CONDUITS AND WIRING MADE OBSOLETE DUE TO NEW CONSTRUCTION SHALL BE REMOVED IN IT'S ENTIRETY, BACK TO THE SERVICE POINT.
- REFER TO ARCHITECTURAL AND MECHANICAL PLANS FOR THE LIMITS OF DEMOLITION WORK.
- REFER TO THE MECHANICAL DRAWINGS FOR THE EXACT LOCATIONS OF THE MECHANICAL EQUIPMENT THAT WILL BE DISCONNECTED.

GENERAL PROJECT NOTES:

- UNLESS OTHERWISE NOTED, PROVIDE ALL EQUIPMENT SHOWN ON THE PLANS. THE ELECTRICAL CONTRACTOR SHALL COORDINATE ALL SYMBOLS SHOWN ON THE PLANS WITH THE SYMBOL LIST. IT SHALL BE THE RESPONSIBILITY OF THE CONTRACTOR TO VERIFY THE INTENT OF ANY SYMBOL THAT IS SHOWN ON THE PLANS AND NOT INDICATED ON THE SYMBOL LIST WITH ELECTRICAL ENGINEER.
- COORDINATE THE FINAL LOCATIONS OF ALL LIGHT FIXTURES WITH THE ARCHITECT'S REFLECTED CEILING PLANS. REPORT ANY DISCREPANCIES TO THE ARCHITECT PRIOR TO INSTALLATION.
- THE CONTRACTOR SHALL VERIFY THE LOCATION OF ALL UNDERGROUND UTILITIES WITHIN THE CONSTRUCTION AREA THREE (3) WORKING DAYS NOTICE BEFORE COMMENCE DIGGING. NOTIFY THE LOCAL OR STATE AUTHORITY HAVING JURISDICTION AND WAIT THE REQUIRED TIME BEFORE COMMENCING TO DIG.
- IT SHALL BE THE RESPONSIBILITY OF THE CONTRACTOR TO NOTIFY THE PROFESSIONAL IF A SYMBOL IS USED ON THE PROJECT BUT DOES NOT SHOW IN THE SYMBOL LIST PRIOR TO BID.
- THE CONTRACTOR SHALL COORDINATE CONDUIT RUNS, CABLE TRAY, LIGHTING FIXTURES AND OTHER EQUIPMENT LOCATIONS WITH THE OTHER TRADE CONTRACTORS TO AVOID CONFLICTS.
- WIRING METHODS FOR PATIENT CARE AREAS SHALL APPLY TO ARTICLE 517 OF THE NATIONAL ELECTRICAL CODE, NFPA 70. REFER TO SPECIFICATION SECTION 280533- RACEWAYS AND BOXES FOR ELECTRICAL SYSTEMS FOR ADDITIONAL INFORMATION.

lakeside architecture
 incorporated
 PO Box 306
 mchenry, maryland
 21541
 ph: 301.387.3380
 fx: 301.387.3382

LAI incorporated
architecture studio
 327 pricketts fort road
 fairmont, wv 26554
 ph: 304.292.7750

Professional Certification. I hereby certify that these documents were prepared or approved by me, and that I am a duly licensed professional engineer under the laws of the State of Maryland.
 License No 45511, Expiration Date: 06/03/2018

CJL ENGINEERING

Frederick
 Frederick Office
 3 West Second Street
 Frederick, MD 21701
 ph:(301)365-9424 fax:(301)365-6558

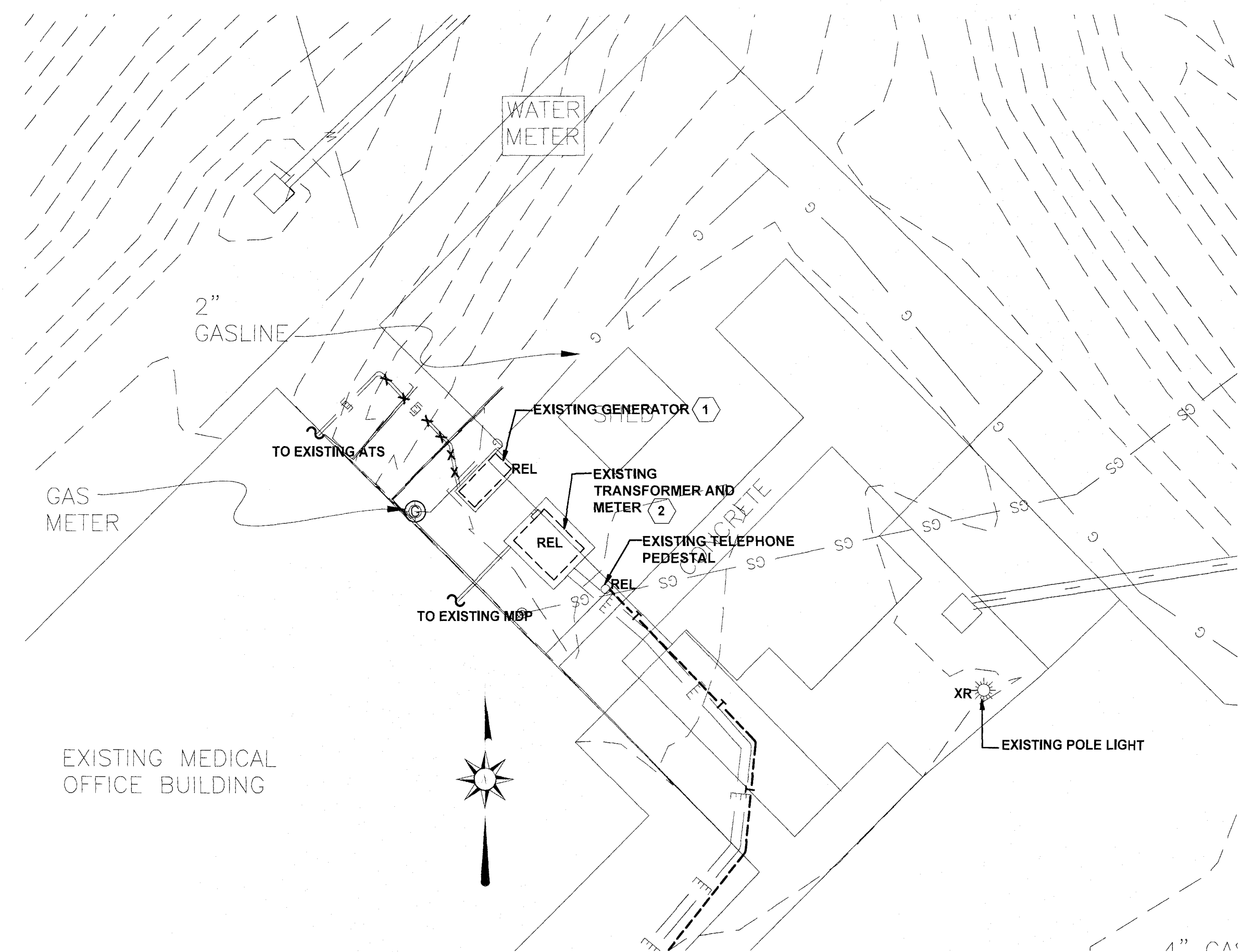
Schematic Design
 Design Development
 Progress
 For Permit - Not For Construction
 Bidding
 Construction Documents

Client Signature for Phase Completion

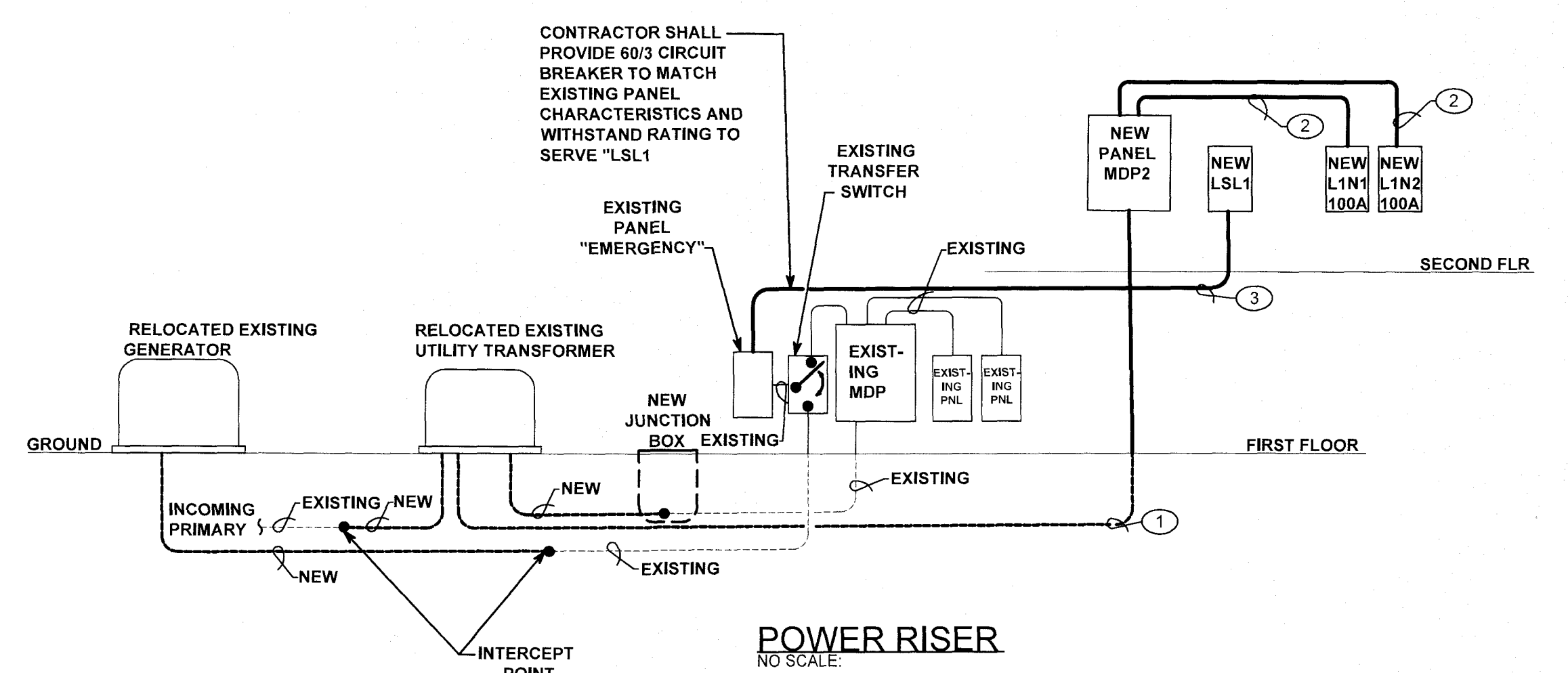
Mountain Laurel Medical Center
 Project Address
Mountain Laurel Medical Center
 10000 Mountain Laurel Road
 Oakland, MD 21550

12/15/2017
 Project Number: 17-0045
Mountain Laurel Medical Center

SYMBOLS AND ABBREVIATIONS - ELECTRICAL



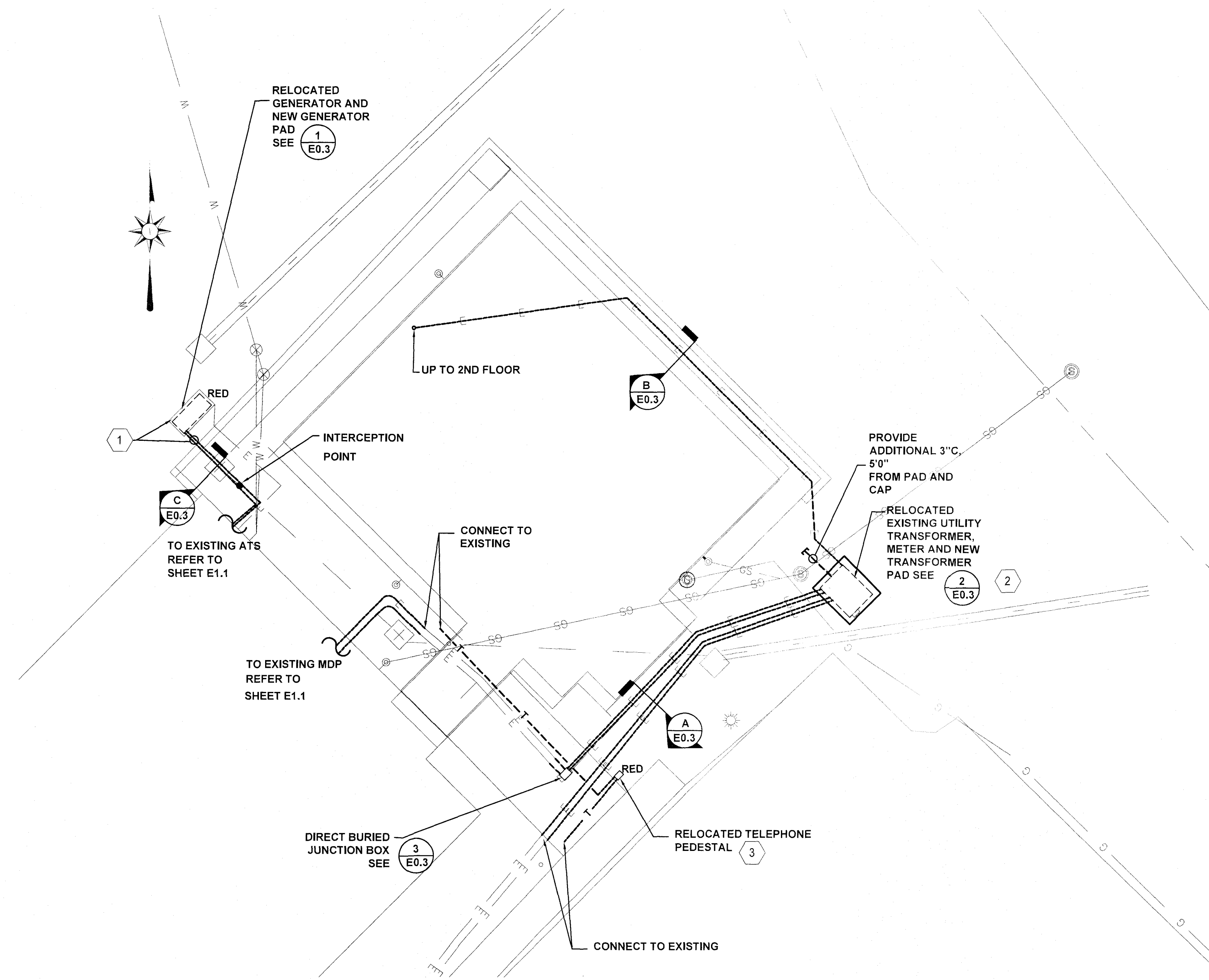
1 PART SITE PLAN - DEMOLITION - ELECTRICAL
 E0.2 SCALE: 1"=10'-0"



POWER RISER
 NO SCALE

FEEDER SCHEDULE

- 1 4 #500KCMIL (1) #3 EGC IN 3-1/2" C
- 2 (4) 3/0 # 6 EGC IN 2-1/2" C
- 3 (4) #4 & 1 #10 EGC IN 1-1/4" C



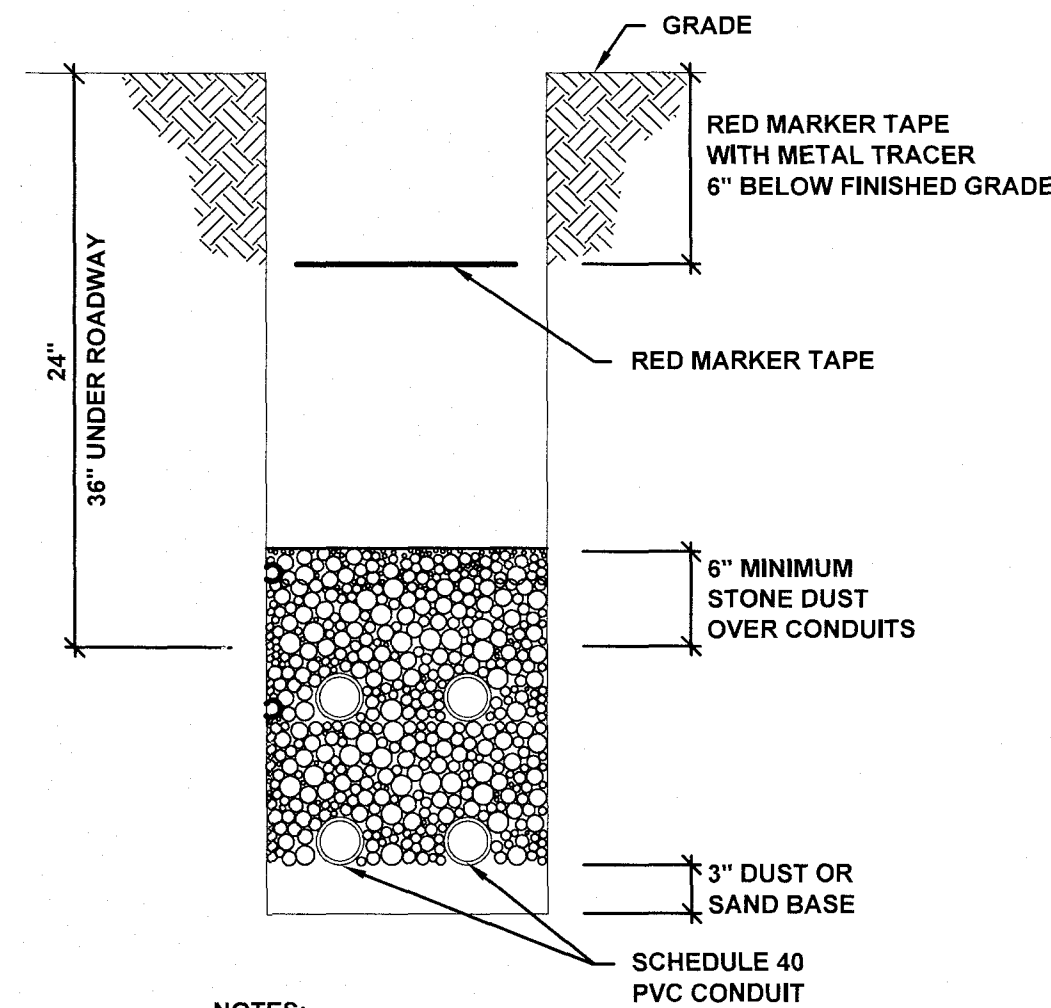
2 PART SITE PLAN - NEW WORK - ELECTRICAL
 E0.2 SCALE: 1"=10'-0"

NUMBERED NOTES:

- 1 EXISTING GENERATOR SHALL BE DISCONNECTED AND RELOCATED. CONTRACTOR SHALL PROVIDE NEW PAD AS INDICATED AND EXTEND EXISTING WIRE AND CONDUIT TO NEW LOCATION.
- 2 EXISTING UTILITY TRANSFORMER TO BE RELOCATED. COORDINATE WITH POTOMAC EDISON. SEE SEQUENCE OF INSTALLATION.
- 3 EXISTING TELEPHONE TO BE RELOCATED. COORDINATE WITH LOCAL TELEPHONE COMPANY. SEE SEQUENCE OF INSTALLATION.

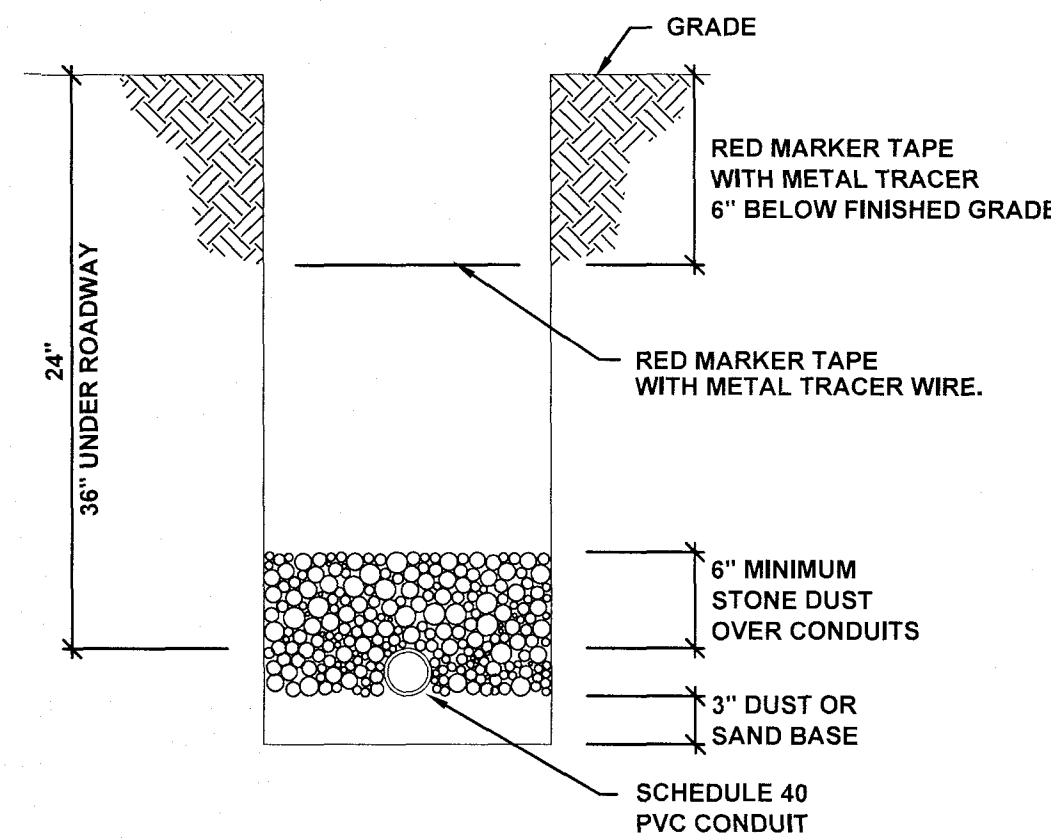
SEQUENCE OF INSTALLATION

- 1. PROVIDE NEW TRANSFORMER PAD AT LOCATION INDICATED. INSTALLATION SHALL BE ACCORDING TO POTOMAC EDISON REQUIREMENTS.
- 2. PROVIDE CONDUITS, SIZES AS INDICATED, FROM NEW TRANSFORMER PAD LOCATION TO RESPECTIVE LOCATION AS INDICATED.
- 3. PROVIDE NEW DIRECT BURIED JUNCTION BOX AT LOCATIONS AS INDICATED.
- 4. COORDINATE WITH POTOMAC EDISON FOR REMOVAL AND RELOCATION OF TRANSFORMER.
- 5. EXTEND EXISTING SECONDARY CONDUITS TO DIRECT JUNCTION BOX AND EXTEND NEW PRIMARY CONDUITS EXISTING LOCATION AND CONNECT.
- 6. PROVIDE CONNECTION BETWEEN EXISTING CONDUITS AT PAD LOCATION REMOVED.
- 7. INSTALL NEW SECONDARY CABLE CONSISTING OF (4) # TO EXISTING MDP.
- 8. COORDINATE WITH POTOMAC EDISON FOR INSTALLATION AT NEW PRIMARY CABLE AND REINSTALLATION OF TRANSFORMER.
- 9. PROVIDE TESTING AT EXISTING MDP FOR PROPER VOLTAGES UPON POWER BEING RESTORE.
- 10. PROVIDE CONNECTIONS BETWEEN EXISTING TELEPHONE CONDUITS AND NEW PEDESTAL LOCATION. COORDINATE INSTALLATION OF NEW CABLES WITH LOCAL TELEPHONE COMPANY.



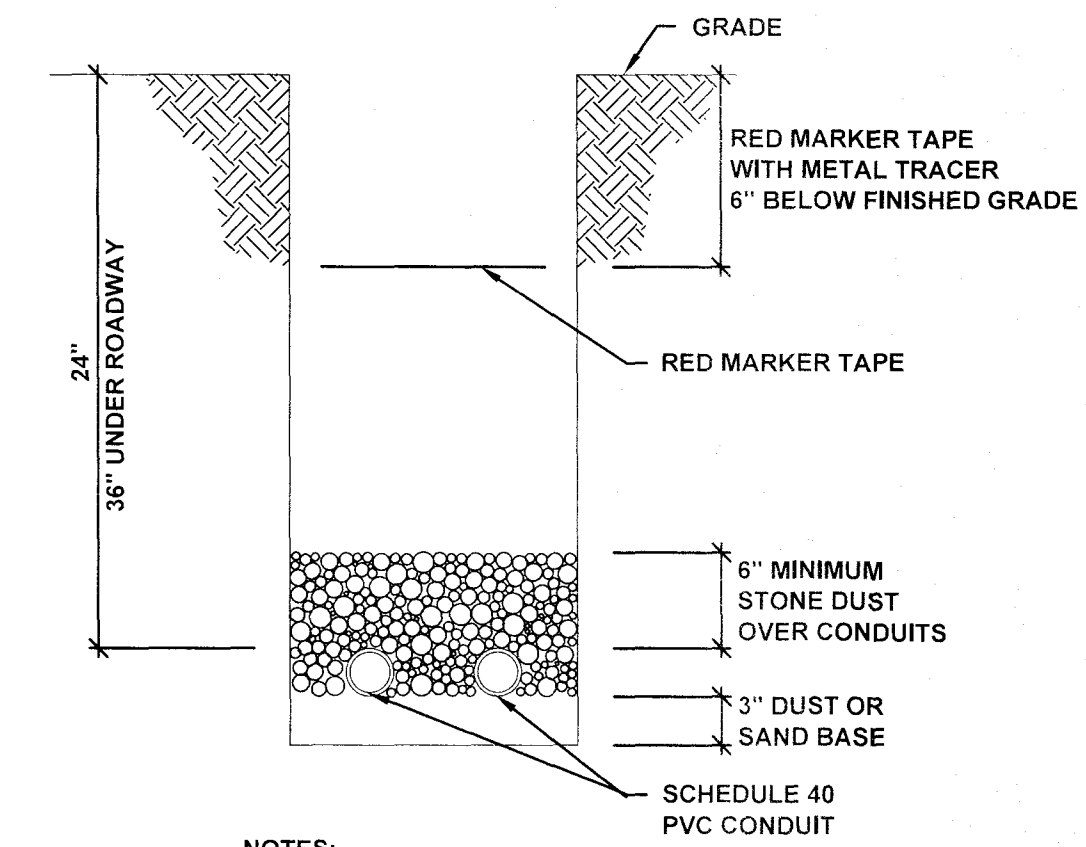
- NOTES:**
1. BACKFILL TO BE COMPACTED IN 6 INCH LAYERS TO AVOID SETTLING.
 2. CONDUITS ARE TO HAVE 2" SEPARATION.
 3. SEE SHEET E0.2 RISER DIAGRAM FOR CONDUIT SIZES

A
E0.4
UNDERGROUND CONDUIT SECTION
NO SCALE



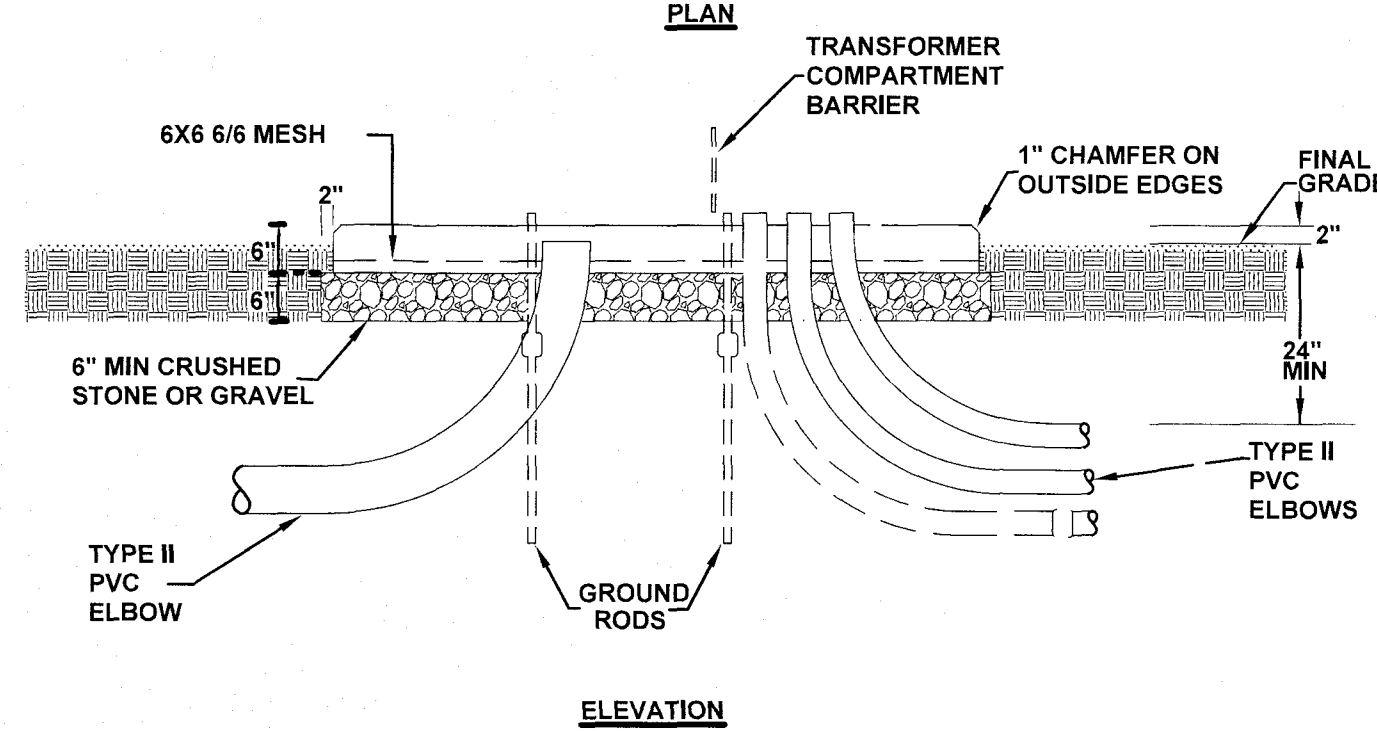
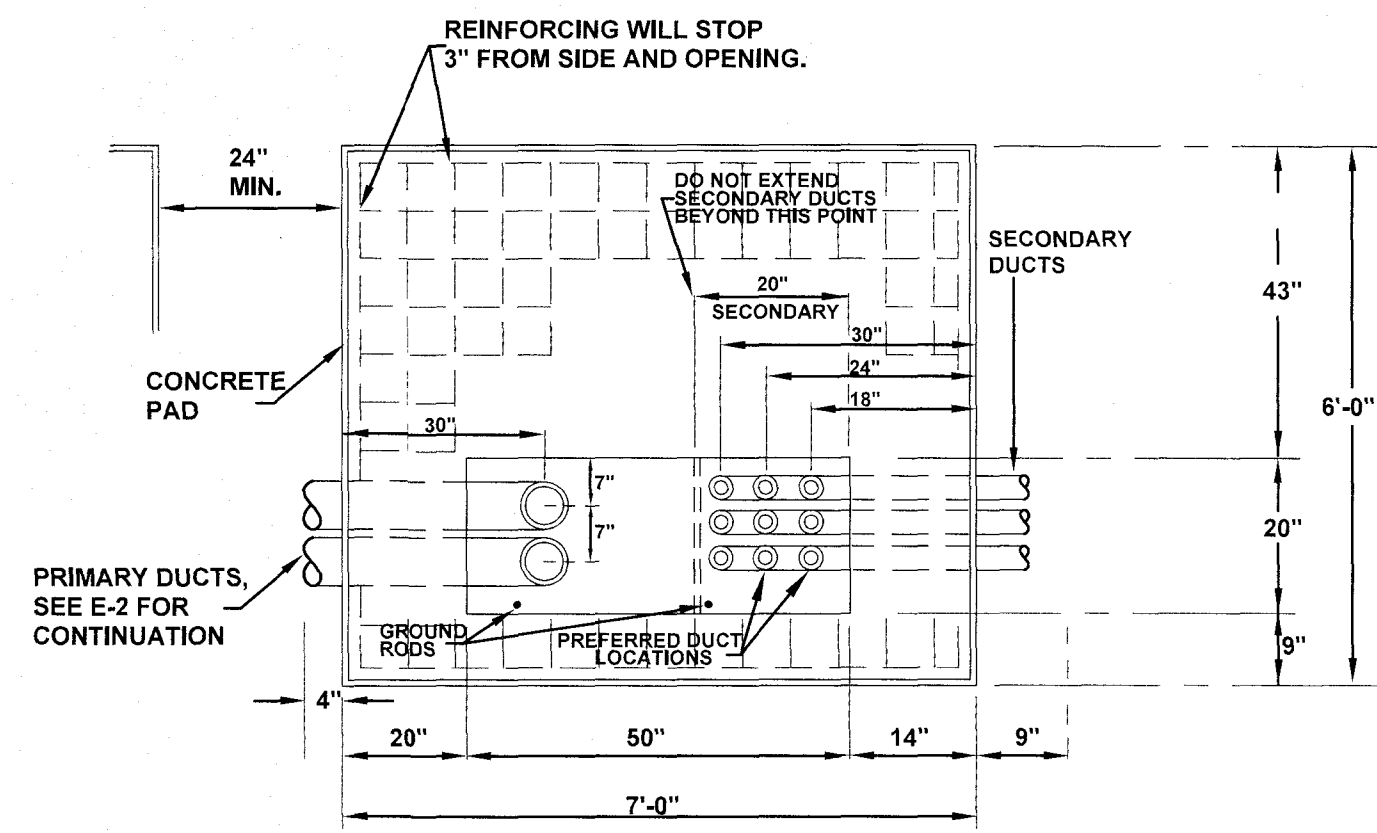
- NOTE:**
1. BACKFILL TO BE COMPACTED IN 6 INCH LAYERS TO AVOID SETTLING.
 2. SEE SHEET E0.2 RISER DIAGRAM FOR CONDUIT SIZES

B
E0.4
UNDERGROUND CONDUIT SECTION
NO SCALE



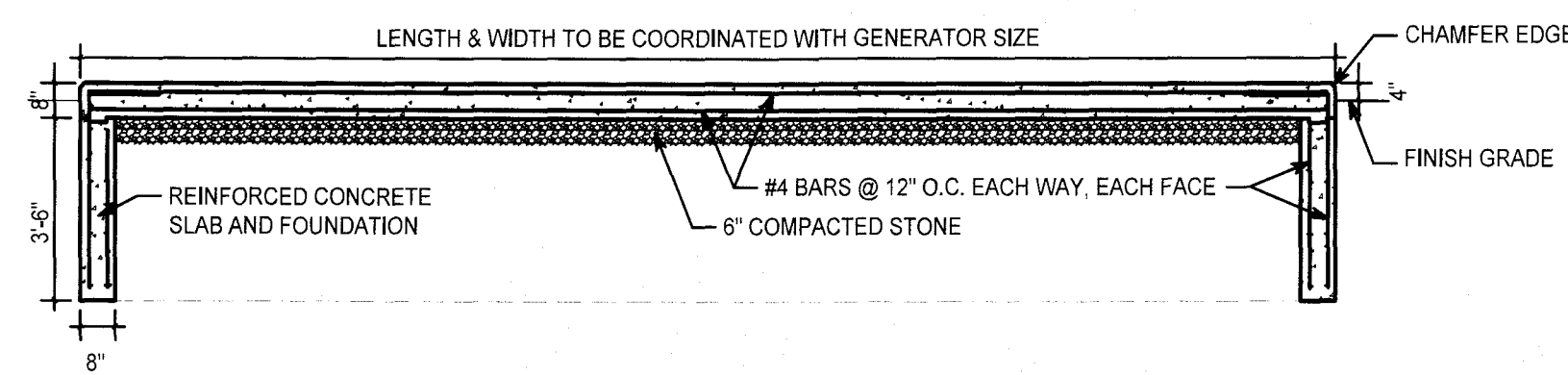
- NOTES:**
1. BACKFILL TO BE COMPACTED IN 6 INCH LAYERS TO AVOID SETTLING.
 2. CONDUITS ARE TO HAVE 2 INCHES OF HORIZONTAL SEPARATION.
 3. SEE SHEET E0.2 RISER DIAGRAM FOR CONDUIT SIZES

C
E0.4
UNDERGROUND CONDUIT SECTION
NO SCALE

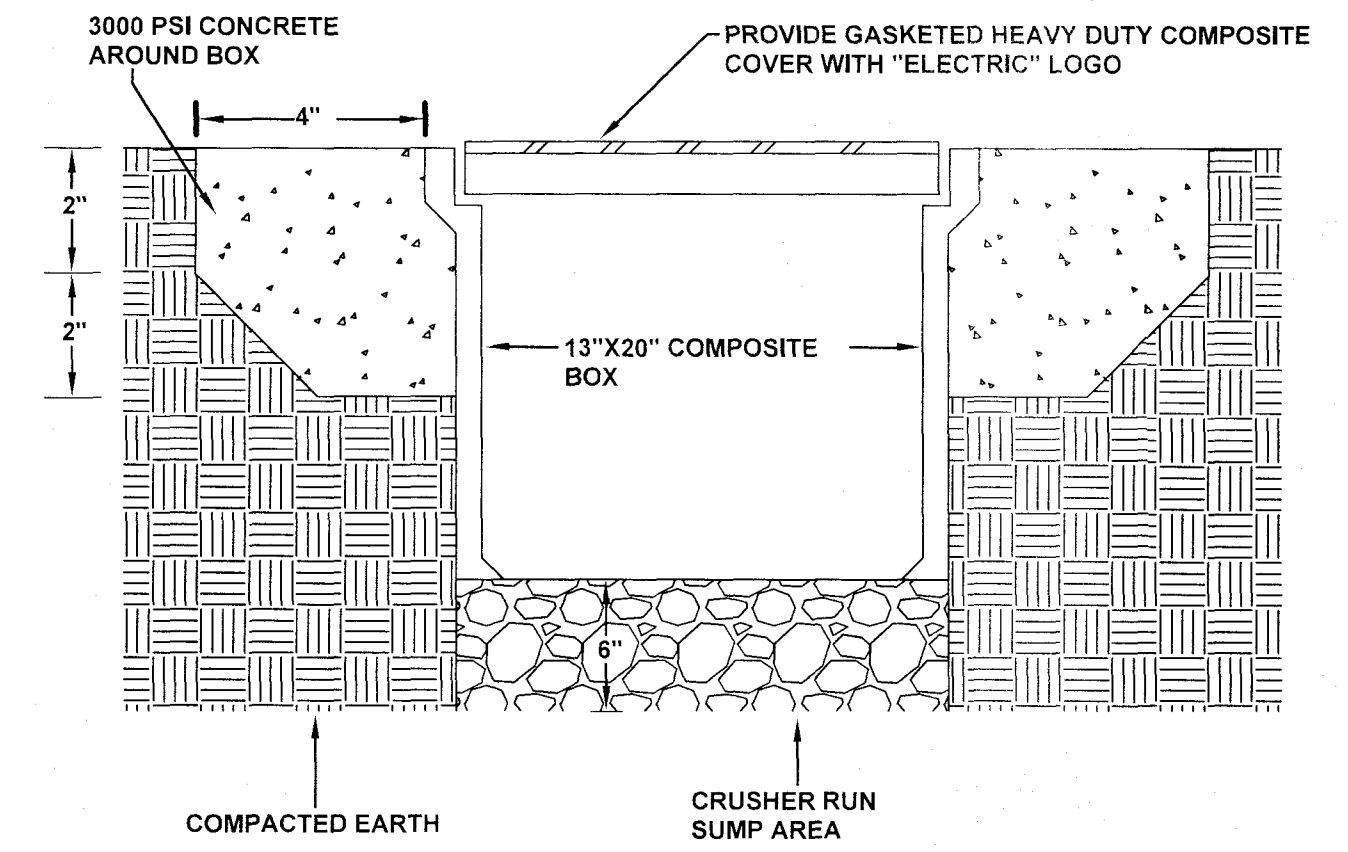


- NOTES:**
- ON POURED IN PLACE CONCRETE PADS, THE CONCRETE SHALL BE 3000 PSI VOLUME OF CONCRETE IS APPROXIMATELY 0.7 CU. YDS WEIGHT IS APPROXIMATELY 2300 LBS.
 - SECONDARY DUCTS SHOULD NOT EXTEND MORE THAN 2" ABOVE THE TOP OF THE FOUNDATION TO ALLOW FOR TERMINATING THE CABLES.
 - EXTEND GROUND RODS 2" ABOVE THE TOP OF THE FOUNDATION TO ACCOMMODATE A GROUND JUMPER.

2
E0.4
**CONCRETE PAD FOUNDATION
PAD MOUNTED TRANSFORMER**
NO SCALE



1
E0.4
GENERATOR PAD DETAIL
NOT TO SCALE



3
E0.4
DIRECT BURIAL JUNCTION BOX DETAIL
NO SCALE

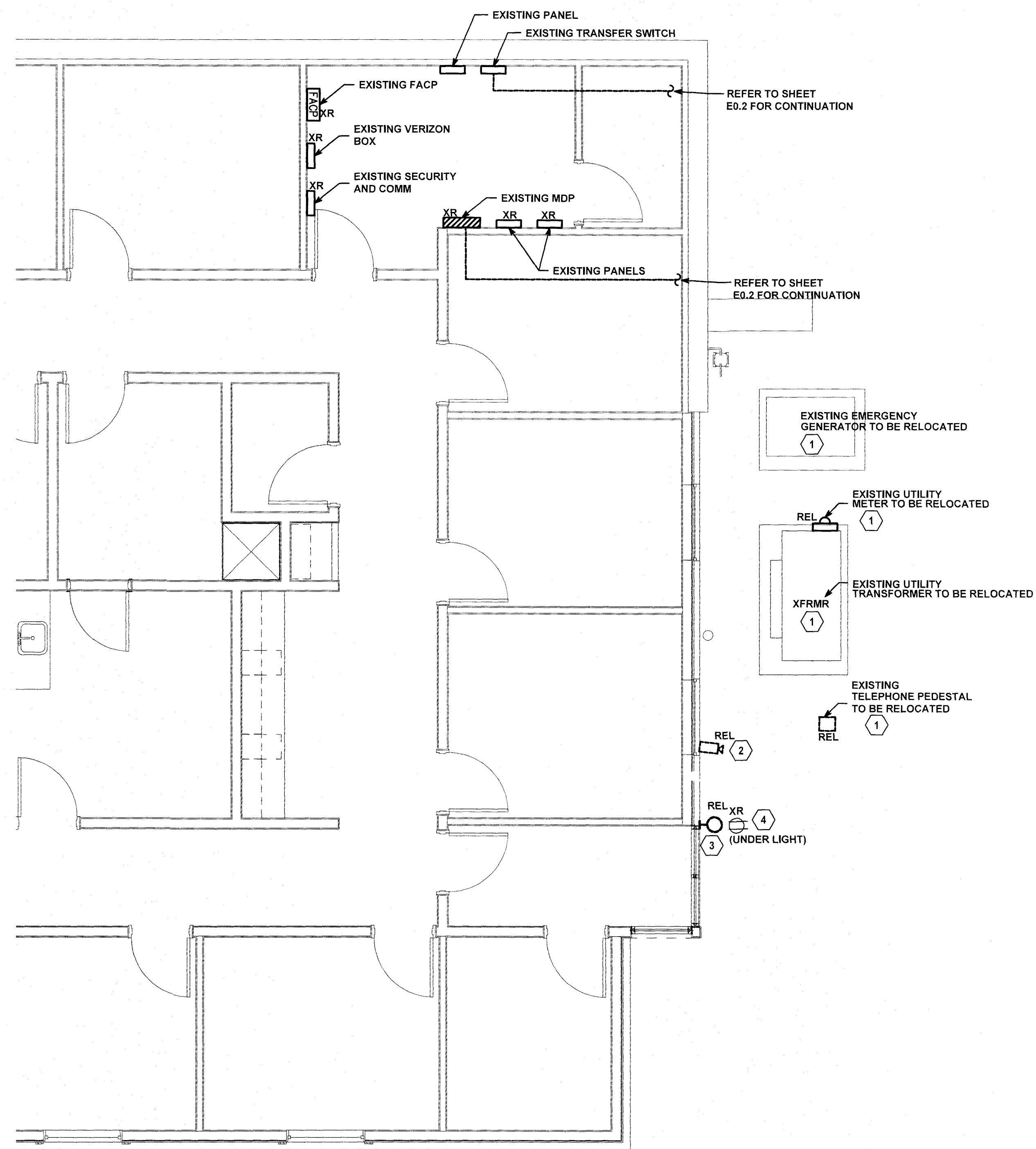
- NOTES:**
1. SEE SITE PLAN FOR QUANTITIES & SIZES OF ELECTRICAL CONDUITS.

Professional Certification. I hereby certify that these documents were prepared or approved by me, and that I am a duly licensed professional engineer under the laws of the State of Maryland. License No 45511, Expiration Date: 06/03/2018

ENGINEERING
 Frederick
 Frederick Office
 3 West Second Street
 Frederick, MD 21701
 ph: (301) 999-4424 fax: (301) 999-6558

Schematic Design
 Design Development
 Progress
 For Permit - Not For Construction
Bidding
 Construction Documents

Client Signature for Phase Completion



NUMBERED NOTES:

- 1 EXISTING TELEPHONE PEDESTAL, TRANSFORMER, METER, AND GENERATOR TO BE RELOCATED. SEE SHEET E0.2 FOR SEQUENCE OF INSTALLATION AND NEW LOCATIONS.
- 2 EXISTING CCTV CAMERA AND ASSOCIATED APPURTENANCES TO BE RELOCATED COORDINATE WITH OWNER PRIOR TO COMMENCING WORK. SEE SHEET E3.1 FOR NEW LOCATION.
- 3 REMOVE EXISTING WALL LIGHT. STORE FOR RELOCATION. SEE SHEET E2.1 FOR NOW LOCATION. COORDINATE WITH ARCHITECT FOR REMOVAL OF BACK BOX. PROVIDE JUNCTION BOX ABOVE CEILING AND REMOVE WIRING BACK TO THIS POINT.
- 4 EXISTING RECEPTACLE TO REMAIN. REMOVE WEATHERPROOF COVER AND REPLACE WITH THERMOPLASTIC COVER. COVER TO MATCH RECEPTACLE.

1 PART FIRST FLOOR PLAN - DEMOLITION - ELECTRICAL
 E1.1 SCALE: 1/4"=1'-0"

Mountain Laurel Medical Center
 Project Address
 Mountain Laurel Medical Center
 10000 Mountain Laurel Road
 Oakland, MD 21550

12/15/2017
 Project Number: 17-0045
 Mountain Laurel
 Medical Center

**PART FIRST
 FLOOR PLAN -
 DEMOLITION -
 ELECTRICAL
 E1.1**