

**ELECTRICAL LEGEND**

SYMBOLS	DESCRIPTIONS
	SINGLE POLE TOGGLE SWITCH
	THREE-WAY TOGGLE SWITCH
	FOUR-WAY TOGGLE SWITCH
	INCANDESCENT DIMMER SWITCH
	DUPLEX RECEPTACLE
	DUPLEX RECEPTACLE, SURFACE MOUNTED MH=24"
	JUNCTION BOX
	MOTOR CONNECTION - NO. INDICATES HORSEPOWER (5HP)
	ENCLOSED CIRCUIT BREAKER
	COMBINATION STARTER / SAFETY SWITCH (SIZE AS INDICATED) MH= 4'-6"
	FUSED SAFETY SWITCH - FUSE SIZE INDICATED (40A) MH=4'-6"
	MANUAL MOTOR STARTER WITH THERMAL OVERLOADS
	CONTROL PANEL - TYPE AS INDICATED
	DISTRIBUTION PANELBOARD
	BRANCH CIRCUIT PANELBOARD
	TRANSFORMER
	GENERATOR
	RACEWAY UP OR TOWARDS
	RACEWAY DOWN OR AWAY
	FIRE ALARM DUCT DETECTOR WITH REMOTE ALARM LIGHT (S-SUPPLY, R-RETURN)
	SMOKE DETECTOR (IONIZATION)
	SPEAKER / HORN
	FIRE ALARM COMBINATION HORN / STROBE
	FIRE ALARM STROBE LIGHT
	LIGHTING FIXTURE - RECESSED, SURFACE, OR PENDANT MOUNTED, TYPE AS SPECIFIED
	LIGHTING FIXTURE TYPE 3 - SEE FIXTURE SCHEDULE
	EMERGENCY BATTERY PACK WITH NO. OF HEADS INDICATED MH=7'-0"
	EXIT SIGN - CEILING OR PENDANT MOUNTED (SHADED PORTION INDICATES FACE)
	EXIT SIGN - WALL MOUNTED - END, BACK
	EXIT SIGN WITH DIRECTIONAL ARROWS
	DRAWING NOTE
	GROUND ROD
	GROUND CONNECTION
	VARIABLE FREQUENCY DRIVE WITH INTEGRAL DISCONNECT SWITCH MH= 4'-6"
	REMOTE ALARM INDICATOR WITH TEST SWITCH
	FLEXIBLE CONDUIT
	RACEWAY UP OR TOWARDS
	RACEWAY DOWN OR AWAY
	RACEWAY CONCEALED IN SLAB OR BELOW GRADE, NO. OF CURRENT CARRYING CONDUCTORS (#) AND SIZE (#10) INDICATED, U.O.N. CONDUCTORS SHALL BE 2#12 A.W.G. & 1#12 GRD, 3/4" CONDUIT.
	RACEWAY CONCEALED IN WALLS OR CEILING SPACE
	BRANCH CIRCUIT HOMERUN TO PANELBOARD - NO. OF CIRCUITS INDICATED BY ARROWS (→)
	RACEWAY RUN EXPOSED ON WALLS OR CEILING

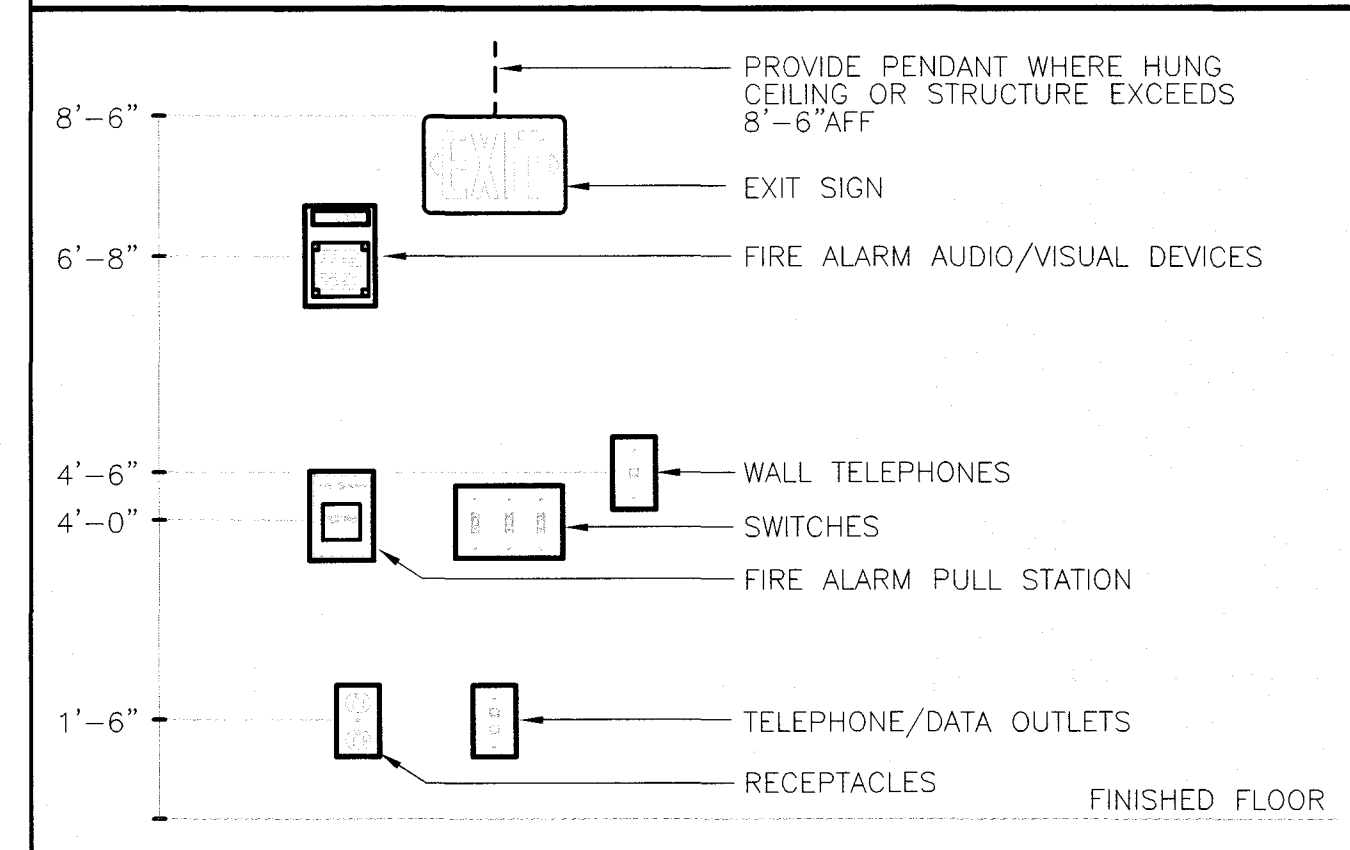
**ELECTRICAL ABBREVIATIONS**

A	- AMPERE	KV	- KILOVOLTS
AC	- ALTERNATING CURRENT	KVA	- KILO-VOLT-AMPERES
A/C	- AIR CONDITIONING	KW	- KILOWATTS
AFF	- ABOVE FINISHED FLOOR	LC	- LIGHTING CONTACTOR
AHU	- AIR HANDLING UNIT	LTG	- LIGHTING
AIC	- AMPS INTERRUPTING CAPACITY	LTNG	- LIGHTNING
ALT	- ALTERNATE	LP	- LIGHTING PANEL
ANN	- ANNUNCIATOR	MATV	- MASTER ANTENNA TELEVISION
APPROX	- APPROXIMATELY	MCB	- MAIN CIRCUIT BREAKER
ARCH	- ARCHITECT	MCC	- MOTOR CONTROL CENTER
ATS	- AUTOMATIC TRANSFER SWITCH	MEH	- METAL HALIDE
AWG	- AMERICAN WIRE GAUGE	MH	- MOUNTING HEIGHT
BLDG	- BUILDING	MLO	- MAIN LUGS ONLY
C, CND	- CONDUIT	MMS	- MANUAL MOTOR STARTER
CATV	- CABLE TELEVISION	MSP	- MOTOR STARTER PANEL
CB	- CIRCUIT BREAKER	MTD	- MOUNTED
CCTV	- CLOSED CIRCUIT TELEVISION	MV	- MERCURY VAPOR
CKT	- CIRCUIT	NC	- NORMALLY CLOSED
CLG	- CEILING	NFSS	- NON-FUSED SAFETY SWITCH
CONN	- CONNECT	NO/#	- NUMBER
CPT	- CONTROL POWER TRANSFORMER	NO	- NORMALLY OPEN
CX	- CONNECT TO EXISTING	OC	- ON CENTER
DC	- DIRECT CURRENT	OH	- OVERHEAD
DISC	- DISCONNECT	Ø	- PHASE
DN	- DOWN	P	- POLE
DP	- DISTRIBUTION PANEL	PB	- PUSHBUTTON
DT	- DOUBLE THROW	PF	- POWER FACTOR
DWG	- DRAWING	PL	- PILOT LIGHT
E	- EMERGENCY	PNL	- PANEL
EA	- EACH	PP	- POWER PANEL
EC	- EMPTY CONDUIT	PT	- POTENTIAL TRANSFORMER
EF	- EXHAUST FAN	PVC	- POLYVINYL CHLORIDE
EH	- ELECTRIC HEATER	Pp	- Pump
ELECT	- ELECTRIC	RCS	- REMOTE CONTROL SWITCH
ETR	- EXISTING TO REMAIN	REC, RECP	- RECEPTACLE
EX	- EXISTING	REQ'D	- REQUIRED
EXP	- EXPOSED	RFI	- RADIO FREQUENCY INTERFACE
EX PRF	- EXPLOSION PROOF	RGS	- RIGID GALVANIZED STEEL
FR	- FRAME	RLA	- RUNNING LOAD AMPERES
FA	- FIRE ALARM	RM	- ROOM
FAAP	- FIRE ALARM ANNUNCIATOR PANEL	RR	- REMOVE AND RELOCATE
FACP	- FIRE ALARM CONTROL PANEL	RX	- REMOVE EXISTING
FBO	- FURNISHED BY OTHERS	SN	- SOLID NEUTRAL
FD&A	- FIRE DETECTION AND ALARM	SP	- SURGE PROTECTION
FC	- FAN COIL	SS	- SAFETY SWITCH
FDR	- FEEDER	ST	- SINGLE THROW
FLA	- FULL LOAD AMPERES	SW	- SWITCH
FLR	- FLOOR	SWBD	- SWITCHBOARD
FU	- FUSED AND FUSIBLE	TBR	- TO BE REMOVED
FUSS	- FUSED SAFETY SWITCH	TC	- TIME CLOCK
GFCI	- GROUND FAULT CIRCUIT INTERRUPTER	TH	- TUNGSTEN HALOGEN
GRD	- GROUND	TR	- TO REMAIN
HID	- HIGH INTENSITY DISCHARGE	TTB	- TELEPHONE TERMINAL BOARD
HOA	- HAND-OFF-AUTOMATIC	TYP	- TYPICAL
HP	- HORSEPOWER	UCB	- UNIT CIRCUIT BREAKER
HP	- HEAT PUMP	UG	- UNDERGROUND
HPS	- HIGH PRESSURE SODIUM	UH	- UNIT HEATER
HTR	- HEATER	UON	- UNLESS OTHERWISE NOTED
HV	- HIGH VOLTAGE	UV	- UNIT VENTILATOR
HZ	- HERTZ	V	- VOLTS
IG	- ISOLATED GROUND	W	- WATTS
JB	- JUNCTION BOX	W/	- WITH
		WP	- WEATHER-PROOF
		XFMR	- TRANSFORMER

**BRANCH CIRCUITS SCHEDULE**

CIRCUIT BREAKER	CONDUCTORS & CONDUIT
<b>120 or 277 VOLT, 1Ø, 2W CIRCUITS</b>	
30A-1P	2 #10 & 1 #10 GROUND - 3/4" CONDUIT
40A-1P	2 #8 & 1 #10 GROUND - 3/4" CONDUIT
50A-1P	2 #6 & 1 #10 GROUND - 1" CONDUIT
60A-1P	2 #4 & 1 #10 GROUND - 1" CONDUIT
<b>208 VOLT, 1Ø, 2W CIRCUITS</b>	
20A-2P	2 #12 & 1 #12 GROUND - 3/4" CONDUIT
30A-2P	2 #10 & 1 #10 GROUND - 3/4" CONDUIT
40A-2P	2 #8 & 1 #10 GROUND - 3/4" CONDUIT
50A-2P	2 #6 & 1 #10 GROUND - 1" CONDUIT
60A-2P	2 #4 & 1 #10 GROUND - 1-1/4" CONDUIT
<b>208 or 480 VOLT, 3Ø, 3W CIRCUITS</b>	
20A-3P	3 #12 & 1 #12 GROUND - 3/4" CONDUIT
30A-3P	3 #10 & 1 #10 GROUND - 3/4" CONDUIT
40A-3P	3 #8 & 1 #10 GROUND - 3/4" CONDUIT
50A-3P	3 #6 & 1 #10 GROUND - 1" CONDUIT
60A-3P	3 #4 & 1 #10 GROUND - 1-1/4" CONDUIT
<b>120/208 &amp; 277/480 VOLT, 3Ø, 4W CIRCUITS</b>	
20A-3P	4 #12 & 1 #12 GROUND - 3/4" CONDUIT
30A-3P	4 #10 & 1 #10 GROUND - 3/4" CONDUIT
40A-3P	4 #8 & 1 #10 GROUND - 3/4" CONDUIT
50A-3P	4 #6 & 1 #10 GROUND - 1" CONDUIT
60A-3P	4 #4 & 1 #10 GROUND - 1-1/4" CONDUIT

**TYPICAL DEVICE MOUNTING HEIGHTS DETAIL**



- DETAIL NOTES:**
1. ALL MOUNTING HEIGHTS SHALL BE MEASURED FROM FINISHED FLOOR TO CENTERLINE OF DEVICES EXCEPT EXIT SIGNS.
  2. DEVICES SHALL BE INSTALLED ON A COMMON VERTICAL CENTERLINE WHEREVER POSSIBLE.
  3. ALL DEVICES SHALL BE INSTALLED AT MOUNTING HEIGHTS AS INDICATED ON THIS DETAIL UNLESS OTHERWISE NOTED.
  4. COORDINATE WITH ARCHITECTURAL DRAWINGS FOR FINAL MOUNTING HEIGHTS.

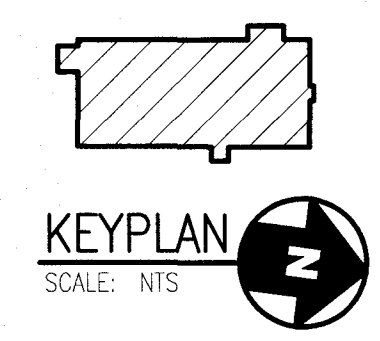
**GENERAL PROJECT NOTES:**

1. INFORMATION SHOWN ON THE ELECTRICAL DRAWINGS PERTAINING TO EXISTING CONDITIONS HAS BEEN OBTAINED FROM AVAILABLE BUILDING DRAWINGS OR GENERAL FIELD OBSERVATIONS AND MAY NOT INDICATE ACTUAL EXISTING CONDITIONS IN DETAIL OR DIMENSION. THE CONTRACTOR IS RESPONSIBLE FOR DETERMINING THE ACTUAL EXISTING CONDITIONS PRIOR TO FABRICATION OR PERFORMANCE OF ANY WORK. SHOULD CONDITIONS BE DISCOVERED THAT PREVENT EXECUTION OF THE WORK AS INDICATED, THE CONTRACTOR SHALL IMMEDIATELY NOTIFY THE ARCHITECT IN WRITING AND AWAIT DIRECTION BEFORE PROCEEDING WITH THE WORK.
2. DEMOLITION SHALL INCLUDE REMOVAL AND OFF-SITE DISPOSAL OF MATERIALS. DO NOT ABANDON IN PLACE ANY MECHANICAL AND RELATED ELECTRICAL COMPONENTS UNLESS OTHERWISE NOTED ON DRAWINGS.
3. UNLESS OTHERWISE NOTED, ELECTRICAL ITEMS SHOWN HEAVY DASHED (---) LINE SHALL BE REMOVED AND ELECTRICAL ITEMS SHOWN LIGHT SOLID (—) LINE SHALL REMAIN. ITEM SHOWN IN HEAVY SOLID (—) LINE SHALL BE CONSIDERED NEW WORK.
4. ELECTRICAL CONTRACTOR SHALL ENSURE THAT THEY ARE IN POSSESSION OF A COMPLETE SET OF MECHANICAL \ ELECTRICAL DRAWINGS TO ENSURE THE ALL ELECTRICAL WORK TO BE COMPLETED UNDER THIS CONTRACT IS BID AND COMPLETED TO THE SATISFACTION OF THE OWNER.
5. ELECTRICAL CONTRACTOR SHALL ENSURE REVIEW THE CONTRACT PHASING DOCUMENTS PRIOR TO THE START OF ANY WORK.

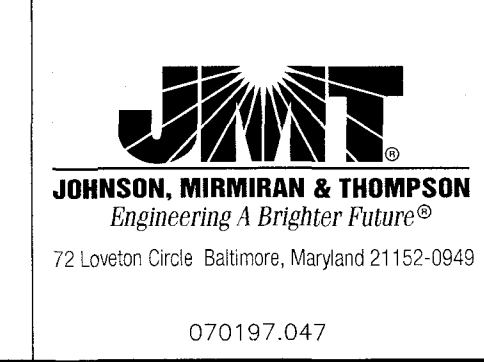
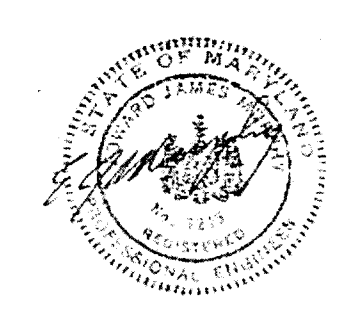
**ELECTRICAL ABBREVIATIONS**

NOTE: THIS IS A STANDARD LEGEND AND ABBREVIATION LIST. SOME ITEMS INDICATED MAY NOT APPEAR ON THE ACCOMPANYING DRAWINGS.

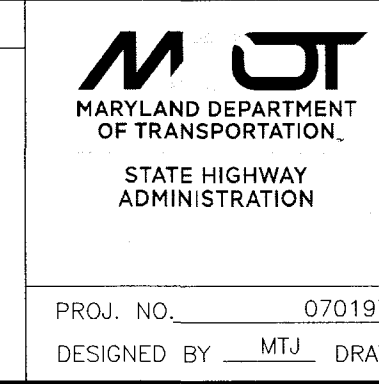
E-001



PROFESSIONAL CERTIFICATION. I HEREBY CERTIFY THAT THESE DOCUMENTS WERE PREPARED OR APPROVED BY ME, AND THAT I AM A DULY LICENSED PROFESSIONAL ENGINEER UNDER THE LAWS OF THE STATE OF MARYLAND.  
 LICENSE NO. 7215  
 EXPIRATION DATE 07/22/18



REVISIONS



STATE OF MARYLAND  
 Maryland Department of Transportation  
 State Highway Administration  
 Office of Maintenance  
 La VALE MAINTENANCE FACILITY - ADMINISTRATION AREA  
 ELECTRICAL LEGEND AND ABBREVIATIONS, AND NOTES

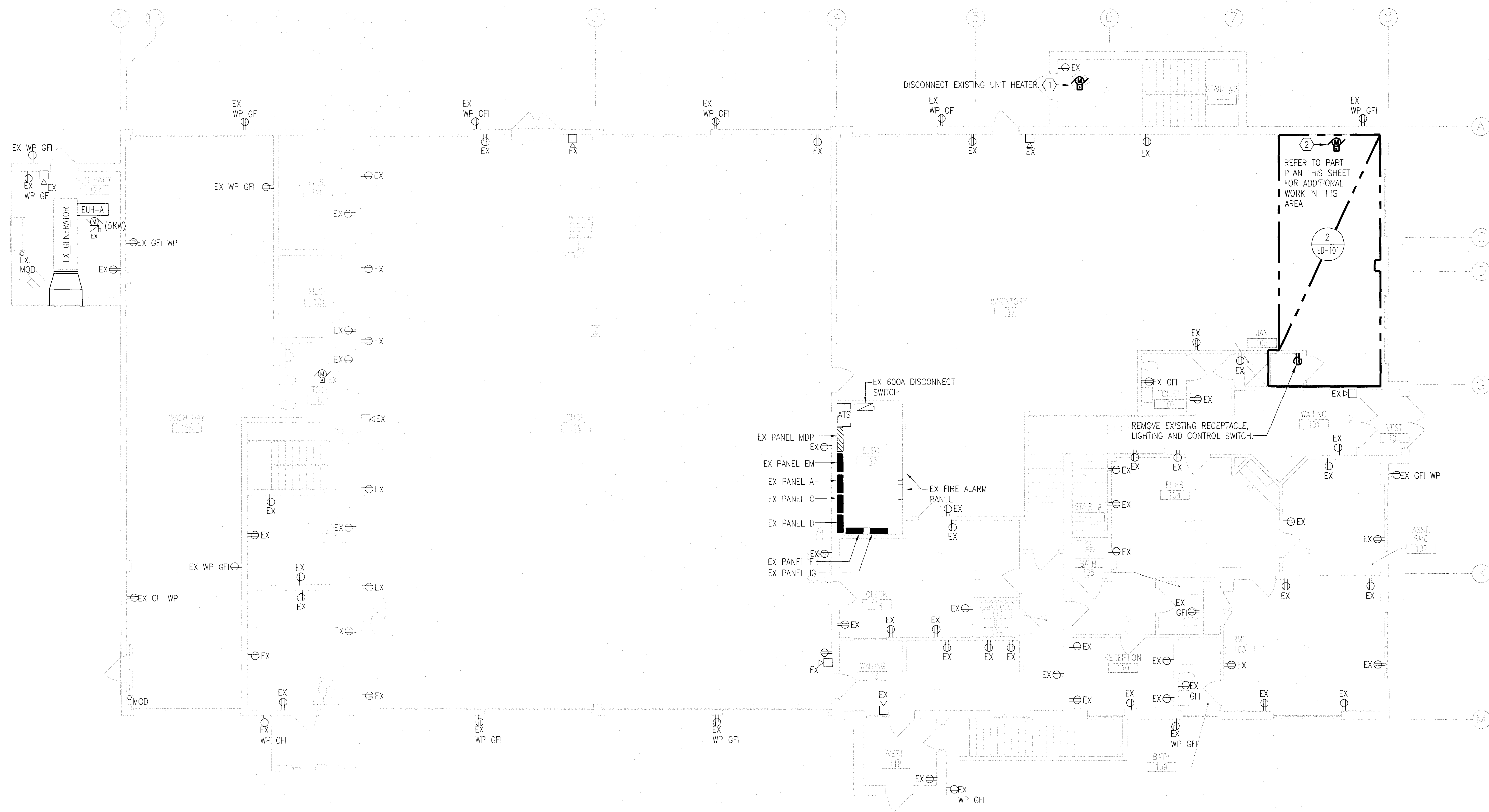
PROJ. NO. 070197-047 F.A.P. NO. SEE TITLE SHEET SHEET NO. 45 OF 55  
 DESIGNED BY MTJ DRAWN BY MTJ CHECKED BY JEG DATE SEPTEMBER 2017

**GENERAL SHEET NOTES:**

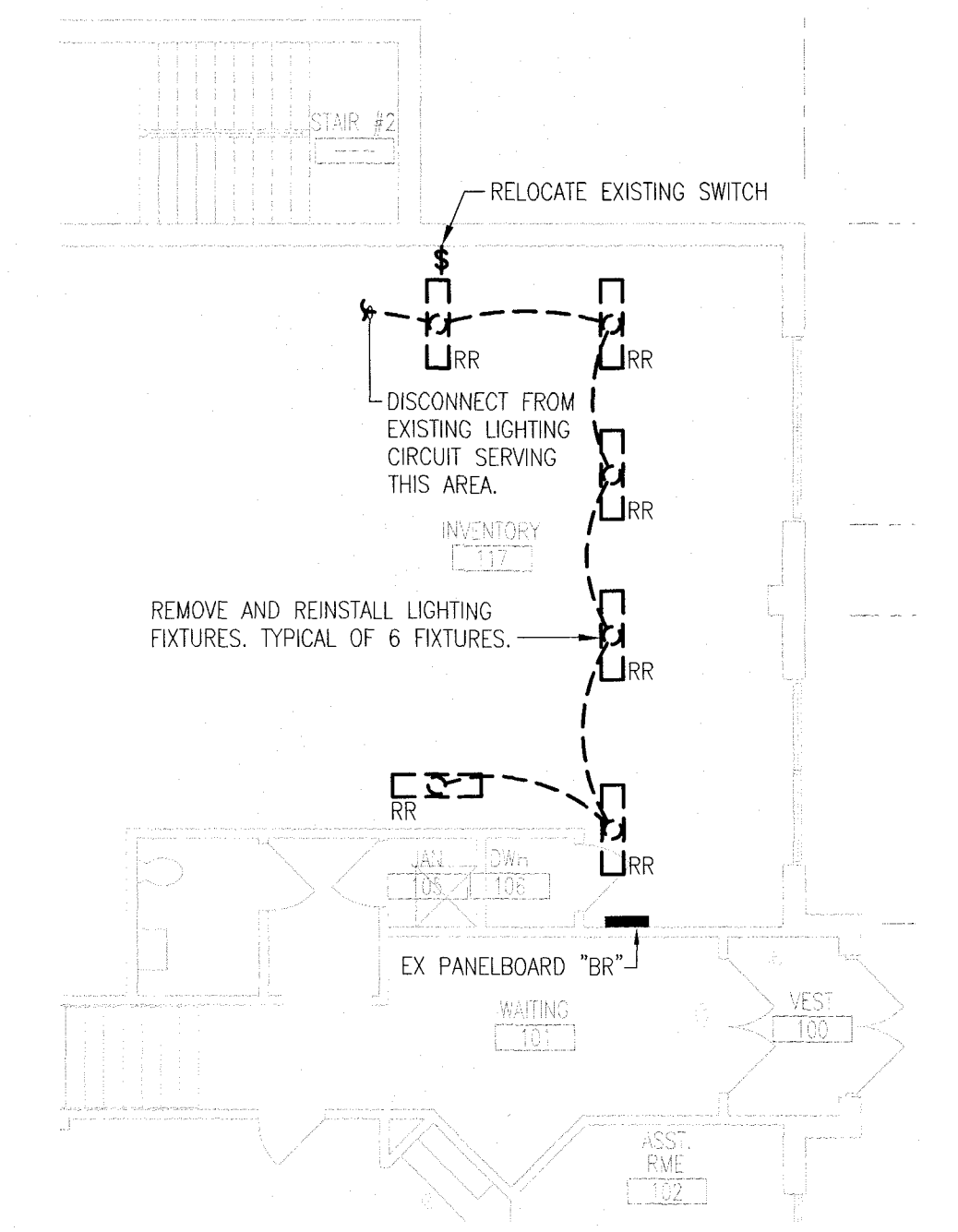
1. INFORMATION SHOWN ON THIS DRAWING PERTAINING TO EXISTING CONDITIONS HAS BEEN OBTAINED FROM AVAILABLE BUILDING DRAWINGS OR GENERAL FIELD OBSERVATIONS AND MAY NOT INDICATE ACTUAL EXISTING CONDITIONS IN DETAIL OR DIMENSION. THE CONTRACTOR IS RESPONSIBLE FOR DETERMINING THE ACTUAL EXISTING CONDITIONS PRIOR TO FABRICATION OR PERFORMANCE OF ANY WORK. SHOULD CONDITIONS BE DISCOVERED THAT PREVENT EXECUTION OF THE WORK AS INDICATED, THE CONTRACTOR SHALL IMMEDIATELY NOTIFY THE ENGINEER IN WRITING AND AWAIT DIRECTION BEFORE PROCEEDING WITH THE WORK.
2. DEMOLITION SHALL INCLUDE REMOVAL AND OFF-SITE DISPOSAL OF MATERIALS. DO NOT ABANDON IN PLACE ANY MECHANICAL AND RELATED ELECTRICAL COMPONENTS UNLESS OTHERWISE NOTED ON DRAWINGS.
3. CONTRACTOR SHALL SURVEY THE ROOMS WHERE THE CEILINGS ARE SCHEDULED TO BE REPLACED AND NOTE ALL CEILING MOUNTED DEVICES AND LIGHTING FIXTURES. CONTRACTOR SHALL REINSTALL EXISTING DEVICES AND LIGHTING FIXTURES. REFER TO ARCHITECTURAL DRAWINGS FOR ADDITIONAL INFORMATION.

**SHEET KEYNOTES:**

1. REMOVE EXISTING ELECTRIC UNIT HEATER. REMOVE EXISTING BRANCH CIRCUIT CONDUIT AND WIRE AND CONTROLS BACK TO SOURCE.
2. REMOVE EXISTING DOOR OPENER, CONDUIT, WIRE AND CONTROLS BACK TO SOURCE.

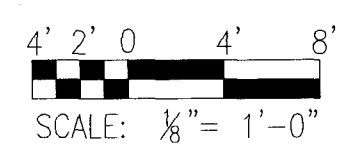
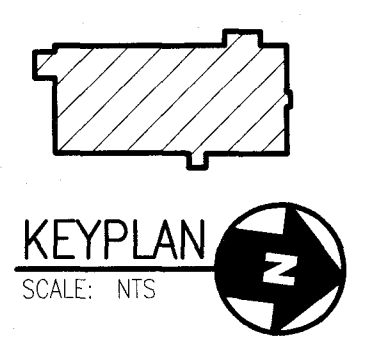


1 ELECTRICAL DEMOLITION - GROUND FLOOR PLAN  
ED101 SCALE: 1/8" = 1'-0"



2 ELECTRICAL DEMOLITION - LIGHTING  
ED101 SCALE: 1/8" = 1'-0"

ED-101



PROFESSIONAL CERTIFICATION. I HEREBY CERTIFY THAT THESE DOCUMENTS WERE PREPARED OR APPROVED BY ME, AND THAT I AM A DULY LICENSED PROFESSIONAL ENGINEER UNDER THE LAWS OF THE STATE OF MARYLAND.  
LICENSE NO. 7215  
EXPIRATION DATE 07/22/18



**JMT**  
JOHNSON, MIRMIRAN & THOMPSON  
Engineering A Brighter Future®  
72 Loveton Circle Baltimore, Maryland 21152-0949  
070197.047

REVISIONS

**MJT**  
MARYLAND DEPARTMENT OF TRANSPORTATION  
STATE HIGHWAY ADMINISTRATION

STATE OF MARYLAND  
Maryland Department of Transportation  
State Highway Administration  
Office of Maintenance  
La VALE MAINTENANCE FACILITY - ADMINISTRATION AREA  
ELECTRICAL DEMOLITION - GROUND FLOOR PLAN  
PROJ. NO. 070197-047 F.A.P. NO. SEE TITLE SHEET SHEET NO. 46 OF 55  
DESIGNED BY EJM. DRAWN BY STJ. CHECKED BY EJM. DATE SEPTEMBER 2017

**GENERAL SHEET NOTES:**

1. INFORMATION SHOWN ON THIS DRAWING PERTAINING TO EXISTING CONDITIONS HAS BEEN OBTAINED FROM AVAILABLE BUILDING DRAWINGS OR GENERAL FIELD OBSERVATIONS AND MAY NOT INDICATE ACTUAL EXISTING CONDITIONS IN DETAIL OR DIMENSION. THE CONTRACTOR IS RESPONSIBLE FOR DETERMINING THE ACTUAL EXISTING CONDITIONS PRIOR TO FABRICATION OR PERFORMANCE OF ANY WORK. SHOULD CONDITIONS BE DISCOVERED THAT PREVENT EXECUTION OF THE WORK AS INDICATED, THE CONTRACTOR SHALL IMMEDIATELY NOTIFY THE ENGINEER IN WRITING AND AWAIT DIRECTION BEFORE PROCEEDING WITH THE WORK.
2. DEMOLITION SHALL INCLUDE REMOVAL AND OFF-SITE DISPOSAL OF MATERIALS. DO NOT ABANDON IN PLACE ANY MECHANICAL AND RELATED ELECTRICAL COMPONENTS UNLESS OTHERWISE NOTED ON DRAWINGS.
3. CONTRACTOR SHALL SURVEY THE ROOMS WHERE THE CEILINGS ARE SCHEDULED TO BE REPLACED AND NOTE ALL CEILING MOUNTED DEVICES AND LIGHTING FIXTURES. CONTRACTOR SHALL REINSTALL EXISTING DEVICES AND LIGHTING FIXTURES. REFER TO ARCHITECTURAL DRAWINGS FOR ADDITIONAL INFORMATION.

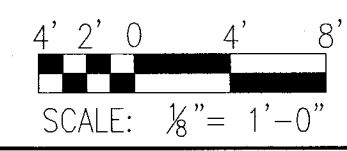
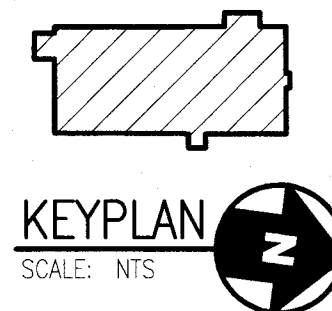
**SHEET KEYNOTES:**

- ① REMOVE EXISTING EXHAUST FAN. REMOVE EXISTING BRANCH CIRCUIT CONDUIT AND WIRE AND CONTROLS BACK TO SOURCE.

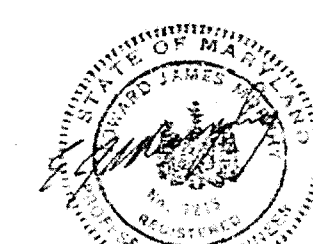


**① ELECTRICAL DEMOLITION – SECOND FLOOR PLAN**  
ED102 SCALE: 1/8" = 1'-0"

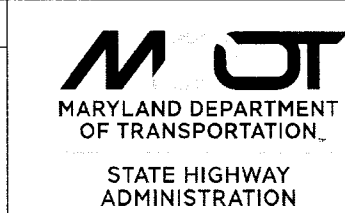
ED-102



PROFESSIONAL CERTIFICATION.  
I HEREBY CERTIFY THAT THESE DOCUMENTS WERE PREPARED OR APPROVED BY ME, AND THAT I AM A DULY LICENSED PROFESSIONAL ENGINEER UNDER THE LAWS OF THE STATE OF MARYLAND.  
LICENSE NO. 7215  
EXPIRATION DATE 07/22/18.



REVISIONS



STATE OF MARYLAND  
Maryland Department of Transportation  
State Highway Administration  
Office of Maintenance  
La VALE MAINTENANCE FACILITY – ADMINISTRATION AREA  
ELECTRICAL DEMOLITION – SECOND FLOOR

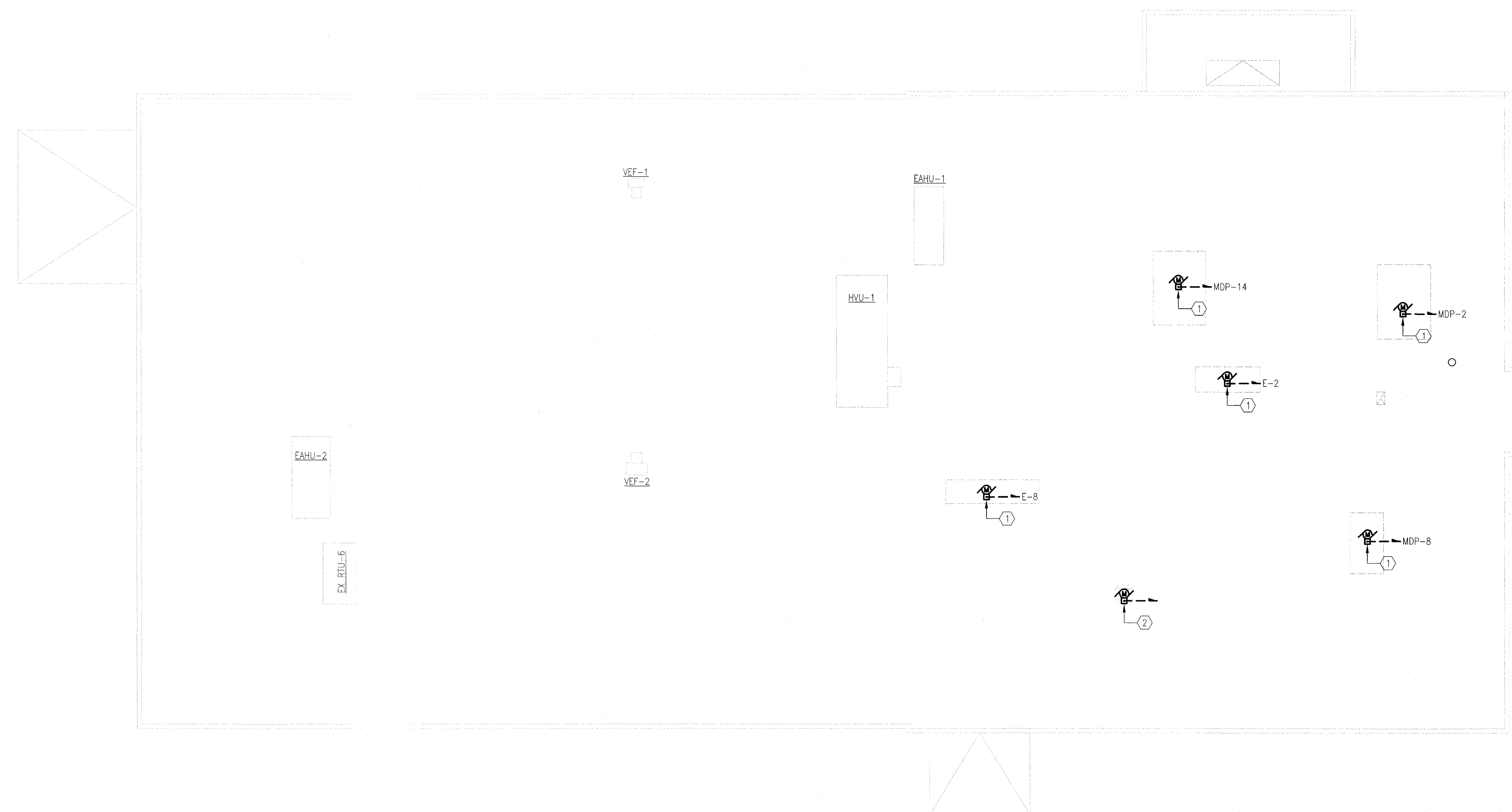
PROJ. NO. 070197-047 F.A.P. NO. SEE TITLE SHEET SHEET NO. 47 OF 55  
DESIGNED BY EJM DRAWN BY STJ CHECKED BY EJM DATE SEPTEMBER 2017

**GENERAL SHEET NOTES:**

1. INFORMATION SHOWN ON THIS DRAWING PERTAINING TO EXISTING CONDITIONS HAS BEEN OBTAINED FROM AVAILABLE BUILDING DRAWINGS OR GENERAL FIELD OBSERVATIONS AND MAY NOT INDICATE ACTUAL EXISTING CONDITIONS IN DETAIL OR DIMENSION. THE CONTRACTOR IS RESPONSIBLE FOR DETERMINING THE ACTUAL EXISTING CONDITIONS PRIOR TO FABRICATION OR PERFORMANCE OF ANY WORK. SHOULD CONDITIONS BE DISCOVERED THAT PREVENT EXECUTION OF THE WORK AS INDICATED, THE CONTRACTOR SHALL IMMEDIATELY NOTIFY THE ENGINEER IN WRITING AND AWAIT DIRECTION BEFORE PROCEEDING WITH THE WORK.
2. DEMOLITION SHALL INCLUDE REMOVAL AND OFF-SITE DISPOSAL OF MATERIALS. DO NOT ABANDON IN PLACE ANY MECHANICAL AND RELATED ELECTRICAL COMPONENTS UNLESS OTHERWISE NOTED ON DRAWINGS.

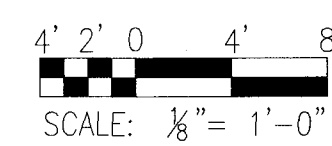
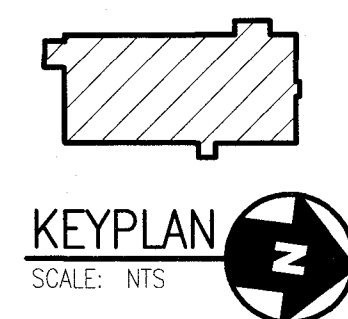
**SHEET KEYNOTES:**

- ① REMOVE EXISTING ROOFTOP AIR HANDLING UNIT. REMOVE EXISTING BRANCH CIRCUIT CONDUIT AND WIRE AND CONTROLS BACK TO SOURCE.
- ② REMOVE EXISTING EXHAUST FAN. REMOVE EXISTING BRANCH CIRCUIT CONDUIT AND WIRE AND CONTROLS BACK TO SOURCE.



① ELECTRICAL DEMOLITION – ROOF PLAN  
ED103 SCALE: 1/8" = 1'-0"

ED-103



PROFESSIONAL CERTIFICATION:  
I HEREBY CERTIFY THAT THESE  
DOCUMENTS WERE PREPARED  
OR APPROVED BY ME, AND  
THAT I AM A DULY LICENSED  
PROFESSIONAL ENGINEER  
UNDER THE LAWS OF THE  
STATE OF MARYLAND.  
LICENSE NO. 7215  
EXPIRATION DATE 07/22/18



REVISIONS

STATE OF MARYLAND  
Maryland Department of Transportation  
State Highway Administration  
Office of Maintenance  
La VALE MAINTENANCE FACILITY – ADMINISTRATION AREA  
ELECTRICAL DEMOLITION – ROOF PLAN

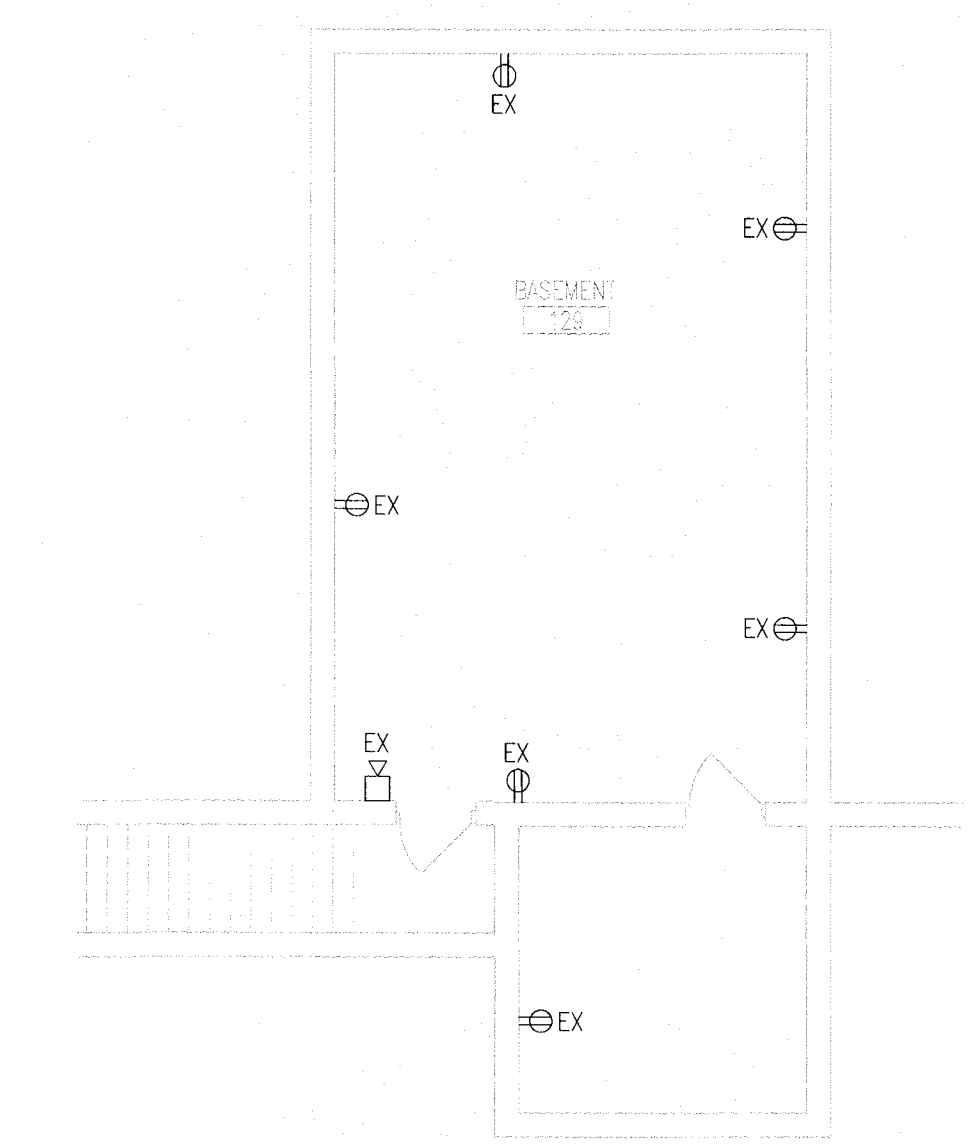
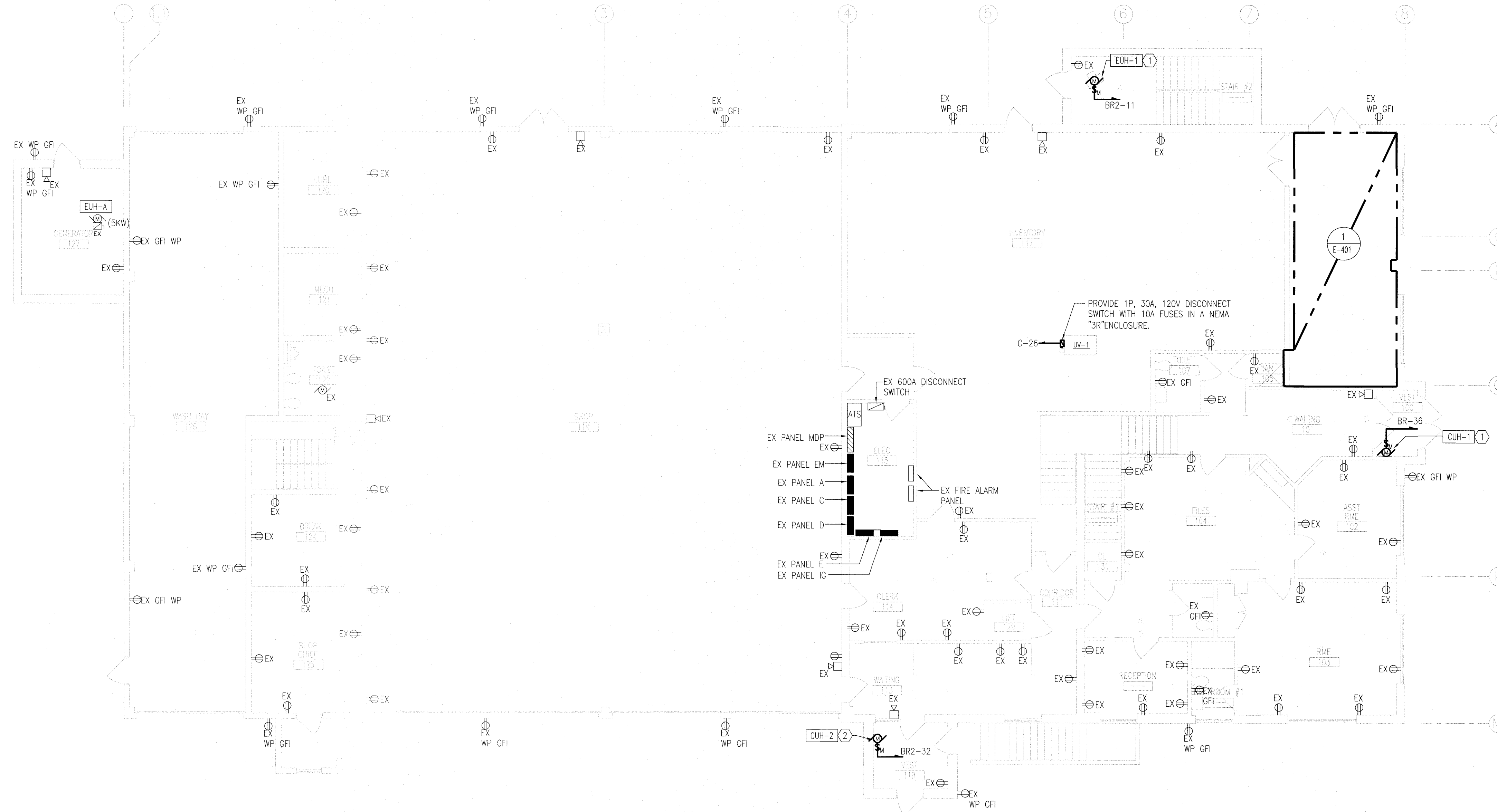
PROJ. NO. 070197-047 F.A.P. NO. SEE TITLE SHEET SHEET NO. 48 OF 55  
DESIGNED BY EJM DRAWN BY STJ CHECKED BY EJM DATE SEPTEMBER 2017

**GENERAL SHEET NOTES:**

1. INFORMATION SHOWN ON THIS DRAWING PERTAINING TO EXISTING CONDITIONS HAS BEEN OBTAINED FROM AVAILABLE BUILDING DRAWINGS OR GENERAL FIELD OBSERVATIONS AND MAY NOT INDICATE ACTUAL EXISTING CONDITIONS IN DETAIL OR DIMENSION. THE CONTRACTOR IS RESPONSIBLE FOR DETERMINING THE ACTUAL EXISTING CONDITIONS PRIOR TO FABRICATION OR PERFORMANCE OF ANY WORK. SHOULD CONDITIONS BE DISCOVERED THAT PREVENT EXECUTION OF THE WORK AS INDICATED, THE CONTRACTOR SHALL IMMEDIATELY NOTIFY THE ARCHITECT IN WRITING AND AWAIT DIRECTION BEFORE PROCEEDING WITH THE WORK.
2. ALL ELECTRICAL EQUIPMENT INDICATED IS EXISTING TO REMAIN UNLESS NOTED OTHERWISE. REFER TO DRAWINGS E-500 & E-501 FOR MODIFICATIONS.
3. CONTRACTOR SHALL SURVEY THE ROOMS ON THE FIRST AND SECOND FLOORS WHERE THE CEILING ARE SCHEDULED TO BE REPLACED AND NOTE ALL CEILING MOUNTED DEVICES AND LIGHTING FIXTURES. CONTRACTOR SHALL REINSTALL EXISTING DEVICES AND LIGHTING FIXTURES. THE CONTRACTOR SHALL PROPERLY SUPPORT ALL EXISTING LIGHTING, SPEAKERS, CABLES, FIRE ALARM DEVICES AND ANY OTHER CEILING DEVICE DURING THE CEILING REMOVAL AND INSTALLATION. ENSURE THAT DEVICES ARE PROPERLY SECURED TO STRUCTURE, SEE DETAIL ON DRAWING E-401. NO FIXTURE SHALL BE SUPPORT BY THE CEILING GRID.

**SHEET KEYNOTES:**

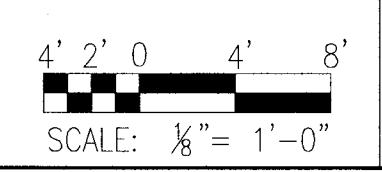
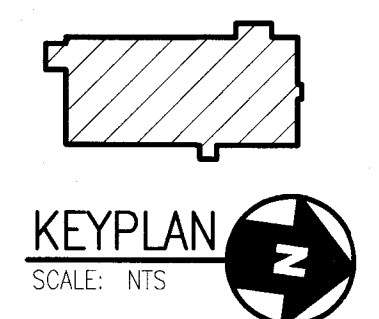
1. ELECTRICAL CONNECTION TO UNIT HEATER. PROVIDE WITH MANUAL MOTOR STARTER WITH THERMAL OVERLOADS.



**1 ELECTRICAL NEW WORK – GROUND FLOOR PLAN**  
E101 SCALE: 1/8" = 1'-0"

**2 ELECTRICAL NEW WORK – BASEMENT PLAN**  
E101 SCALE: 1/8" = 1'-0"

E-101



PROFESSIONAL CERTIFICATION.  
I HEREBY CERTIFY THAT THESE DOCUMENTS WERE PREPARED OR APPROVED BY ME, AND THAT I AM A DULY LICENSED PROFESSIONAL ENGINEER UNDER THE LAWS OF THE STATE OF MARYLAND.  
LICENSE NO. 7215  
EXPIRATION DATE 07/22/18



**JOHNSON, MIRIRAN & THOMPSON**  
Engineering A Brighter Future®  
72 Loveton Circle, Baltimore, Maryland 21152-0949  
070197.047

REVISIONS

**MJT**  
MARYLAND DEPARTMENT OF TRANSPORTATION  
STATE HIGHWAY ADMINISTRATION

STATE OF MARYLAND  
Maryland Department of Transportation  
State Highway Administration  
Office of Maintenance  
La VALE MAINTENANCE FACILITY – ADMINISTRATION AREA  
ELECTRICAL NEW WORK – GROUND FLOOR PLAN

PROJ. NO. 070197-047 F.A.P. NO. SEE TITLE SHEET SHEET NO. 49 OF 55  
DESIGNED BY: MTJ DRAWN BY: STJ CHECKED BY: EJM DATE: SEPTEMBER 2017