

PACKAGED ROOF TOP HEAT PUMP UNIT SCHEDULE

MARK	MTZ / MODEL	NOMINAL TONS	SUPPLY FAN		OUTSIDE AIR CONDITIONS		ASB TO BUILDING		COOLING CAPACITY		HEATING CAPACITY		ELECTRICAL		REMARKS									
			CFM	HP	DB	WB	DB	WB	SHALLER	WINTER	SPRINGER	ENTERING AIR	EXITING AIR	HEATING SECTION		MCA	MOP	V/F	RES SW	SEER	INDOORS L X W X H	OUTDOORS L X W X H		
RTU-1	50KCR068	5	1658	.60	1.0	50	59	85	60.07	42.27	86.4	67.7	9.8	57.14	99	100	230/1	NO	15.0	74.4	46.8	41.4	705	ALL
RTU-2	50KCR068	5	1658	.60	1.0	50	59	85	60.07	42.27	86.4	67.7	9.8	57.14	99	100	230/1	NO	15.0	74.4	46.8	41.4	705	ALL

REMARKS:
1. PROVIDE WITH MANUFACTURER THERMISTAT/CO2 SENSOR.
2. PROVIDE WITH ECONOMIZER AND BROWNEVIC RELIEF.
3. PROVIDE WITH CONDENSATE PUMP.
4. PROVIDE WITH FACTORY MOUNTED CONVENIENCE OUTLET.
5. PROVIDE WITH MANUFACTURER'S CURB.
6. PROVIDE WITH 30" WIDE FACTORY MOUNTED BRANCHED UNIT.

REGISTERS, GRILLES & DIFFUSERS SCHEDULE

MARK	MANUF / MODEL	MATERIAL / TYPE	GRILLE SIZE	PANEL SIZE	INLET SIZE (IN)	BRANCH DUCT SIZE (IN)	CFM (AMP-MA)	MAX FZ.	AIR PATTERN	MAX RS
S-1	TRUS JWB-AN SERIES	ALUMINUM ALUMINUM SQUARE DIFFUSERS	18x18	20x20	12x12	10"	226-400	.05	4-WAY	25
S-2	TRUS JWB-AL	ALUMINUM SUPPLY GRILLE	12x6	14x10	10"	10"	226-400	.05	4-WAY	25
R-1	TRUS JWB-50F	ALUMINUM EXHAUST RETURN GRILLE	22x22	24x24	16"	16"	1950	.05	-	25

REMARKS:
1. PROVIDE WITH 18" X 18" WIRE MESH.
2. COORDINATE MOUNTING TYPE (W-A, O-P, R-BOARD, ETC.) WITH ARCHITECTURAL DRAWINGS.
3. PROVIDE OPTIONAL AIR ADJUSTER RIPS/AIR PATTERN DEFLECTORS.

SPLIT SYSTEM INDOOR UNIT SCHEDULE

MARK	MANUF	MODEL	COOLING CAPACITY (BTU/H)	CFM	COOLING POWER (KW)	HEATING INPUT POWER (KW)	VOLTAJE	PHASE	MINIMUM INLET	MCA	MOP	VOLTAJE	PHASE	NOM. SIZE (IN)	WEIGHT (LBS)	REMARKS
CU-10	DANNA	FX32N140J	22627411	55	10.2	13.1	12.1A	1S	12.1A	15.4	208-230 V	1	1	11.03x9.8	18	ALL
CU-12	DANNA	RN32N140J	22627411	60	13.3	9.8	10.4	1S	12.2A	15.4	208-230 V	1	1	11.03x9.8	18	ALL
CU-18	DANNA	DO32N140J	22627413	97	20	14.8	13	1S	13.2A	20.4	208-230 V	1	1	12.03x10.0	27	ALL

REMARKS:
1. PROVIDE WITH CONDENSATE PUMP.
2. PROVIDE 230 V CONDENSATE PUMP POWERED FROM INDOOR UNIT. CONDENSATE PUMP SHALL BE CAPABLE OF 10 FEET OF HEAD.
3. FEET OF HEAD OF UNIT AT 7" ΔT.
4. PROVIDE MANUFACTURER REFRIGERANT PIPE COVER TO HIDE ALL EXPOSED REFRIGERANT PIPE IN ROOM.
5. PROVIDE ONE(1) SPARE SET OF FILTERS FOR INDOOR UNITS.

SPLIT SYSTEM OUTDOOR UNIT SCHEDULE

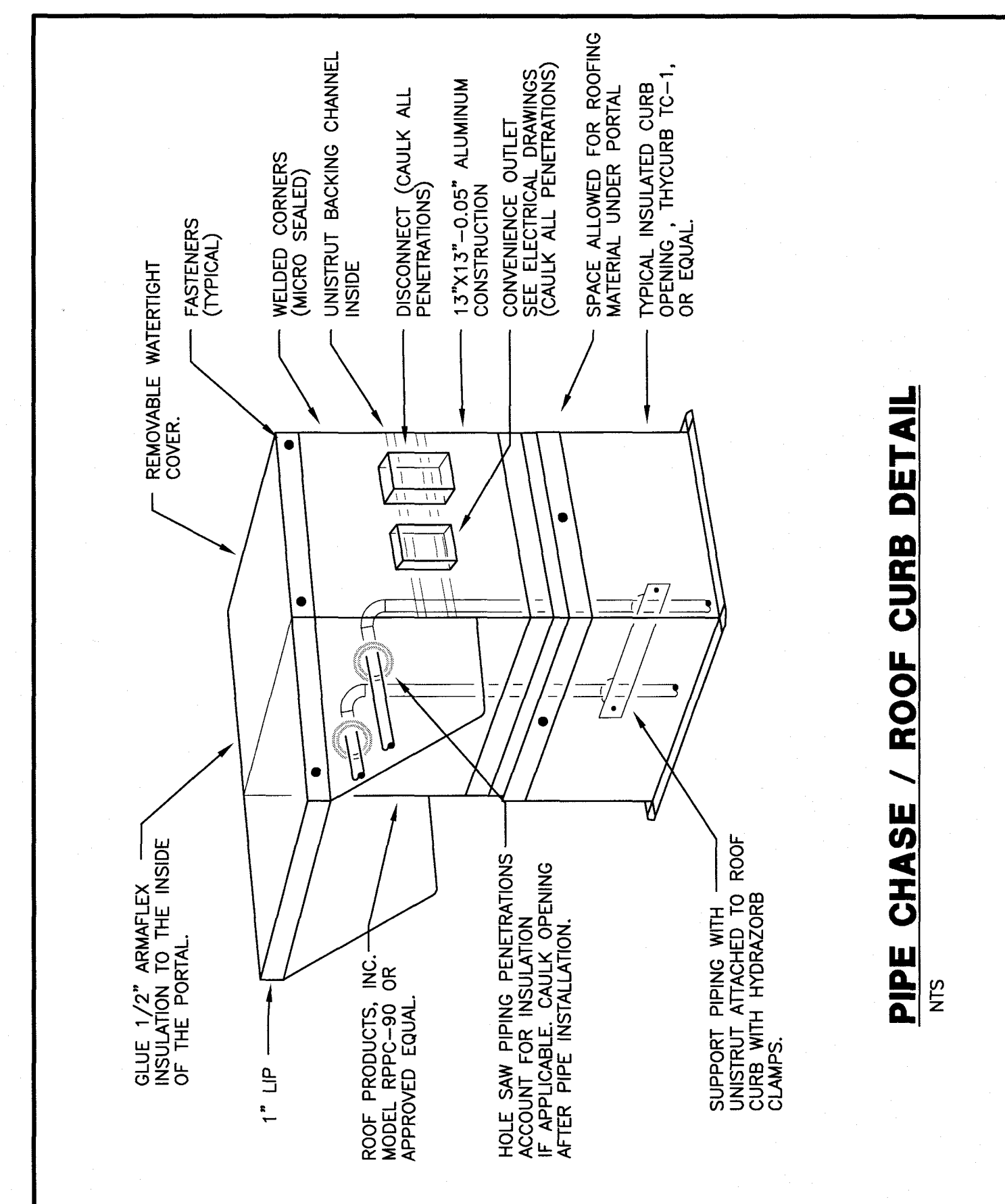
MARK	MANUF	MODEL	NOM. SIZE (IN)	WEIGHT (LBS)	COOLING CAPACITY (BTU/H)	CFM	COOLING POWER (KW)	HEATING CAPACITY (BTU/H)	CFM	HEATING POWER (KW)	MINIMUM INLET	MCA	MOP	VOLTAJE	PHASE	REMARKS
CU-10	DANNA	RN32N140J	22627411	55	10.2	13.1	12.1A	15.4	208-230 V	1	12.1A	15.4	208-230 V	1	1	ALL
CU-12	DANNA	RN32N140J	22627411	60	13.3	9.8	10.4	1S	12.2A	15.4	208-230 V	1	1	1	1	ALL
CU-18	DANNA	DO32N140J	22627413	97	20	14.8	13	1S	13.2A	20.4	208-230 V	1	1	1	1	ALL

REMARKS:
1. UNLISTED AND NEC COMPLIANT DISCONNECT MEANS PROVIDE WITH THERMAL OVERLOAD PROTECTION.
2. PROVIDE 230 V CONDENSATE PUMP POWERED FROM INDOOR UNIT.
3. PROVIDE SURFACE MOUNTING FRAME.
4. PROVIDE RELAY FOR BAS INTEGRATION.

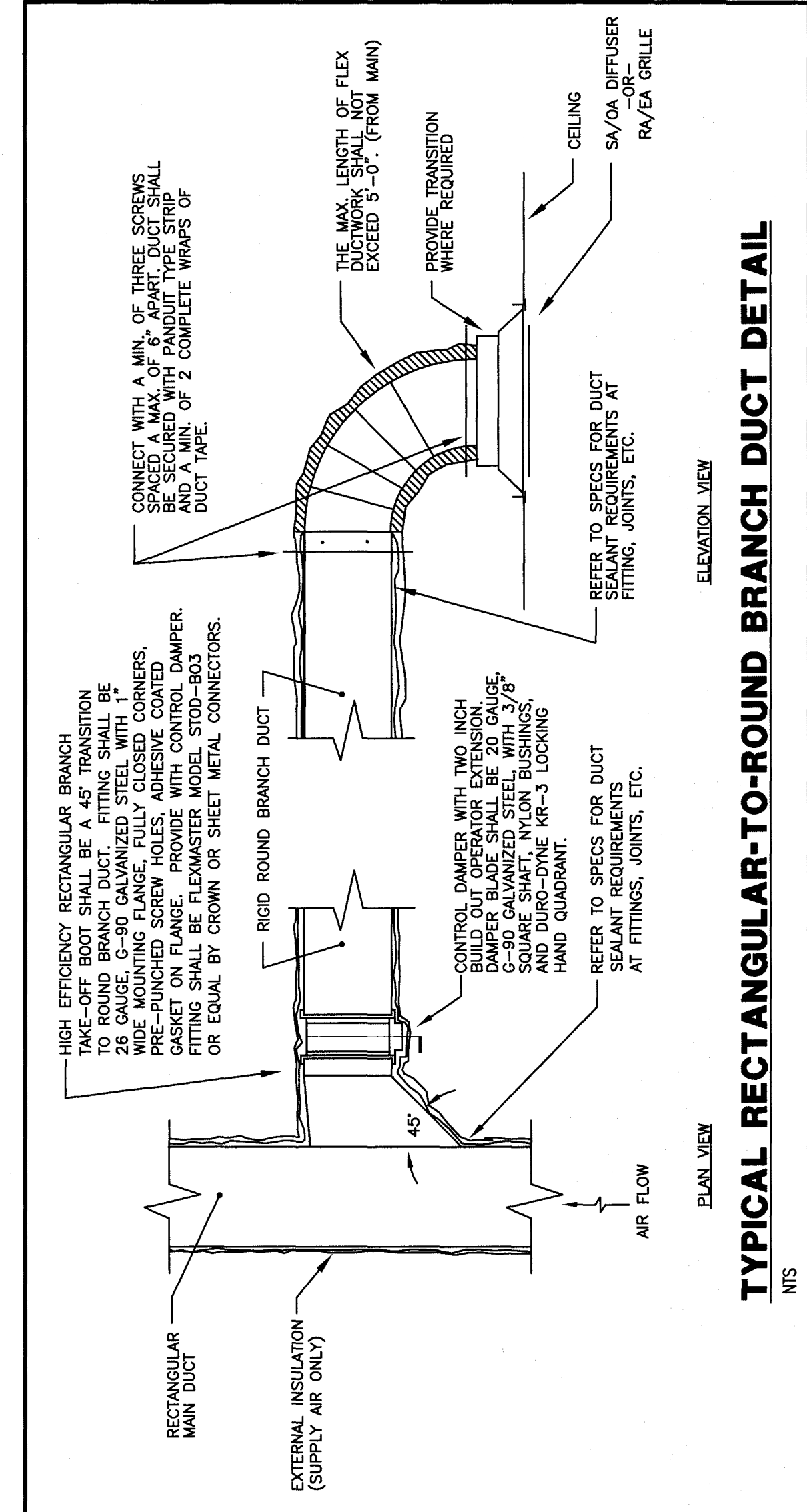
ELECTRIC HEATERS

MARK	MANUF / MODEL	MOUNTING	CFM	KW	ELECTRICAL	REMARKS
EW-1	SHAOZDZS4F	WALL	65	75	240V 1 3.2	ALL
EW-2	SHAOZDZS4F	WALL	65	1.5	240V 1 0.25	ALL
EW-3	SHAOZDZS4F	WALL	65	2	240V 1 8.4	ALL
EW-4	ETC42ZFT	WALL	100	3	240V 1 12.5	ALL

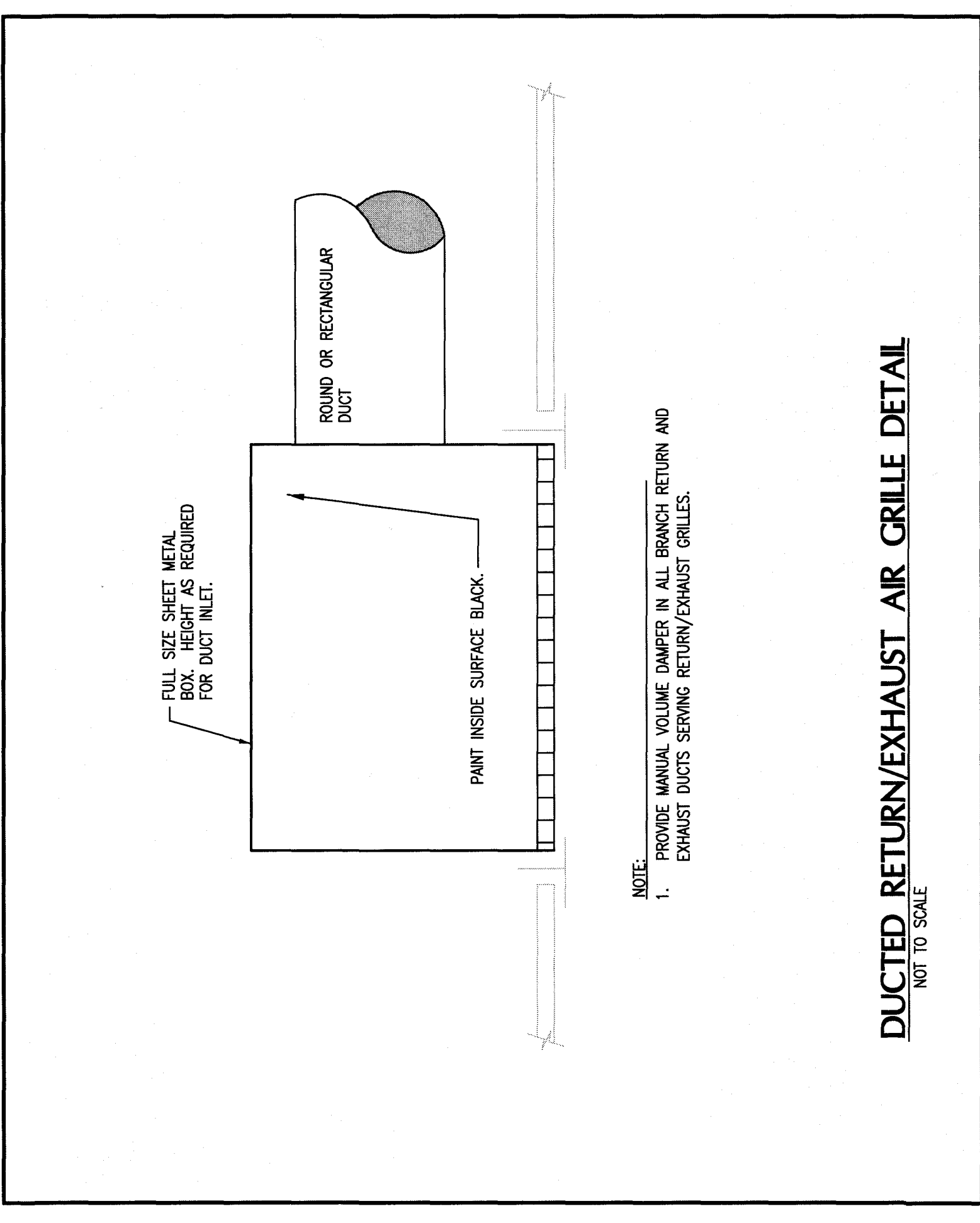
REMARKS:
1. UNLISTED AND NEC COMPLIANT POWER DISCONNECT MEANS PROVIDE WITH THERMAL OVERLOAD PROTECTION.
2. PROVIDE 230 V CONDENSATE PUMP POWERED FROM INDOOR UNIT.
3. PROVIDE SURFACE MOUNTING FRAME.
4. PROVIDE RELAY FOR BAS INTEGRATION.



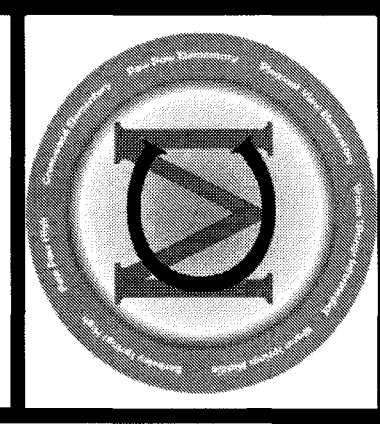
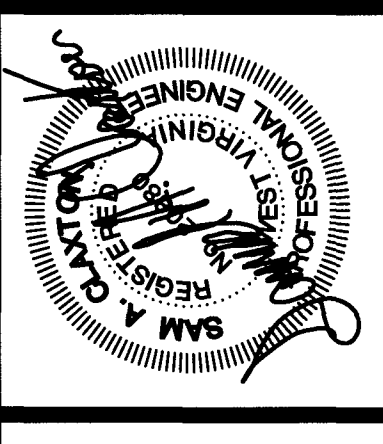
PIPE CHASE / ROOF CURB DETAIL
N1S



TYPICAL RECTANGULAR-TO-ROUND BRANCH DUCT DETAIL
N1S



DUCTED RETURN/EXHAUST AIR GRILLE DETAIL
N1S TO SCALE



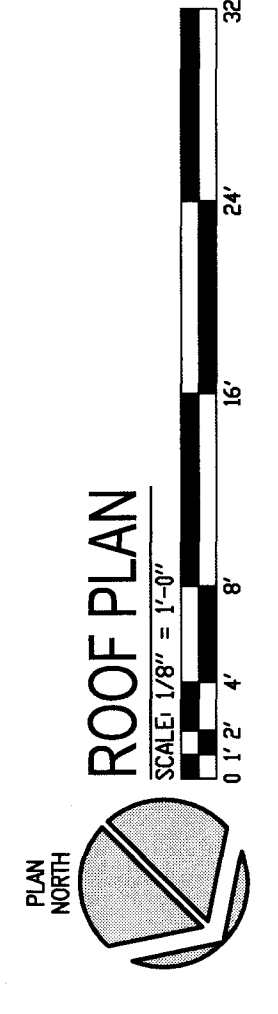
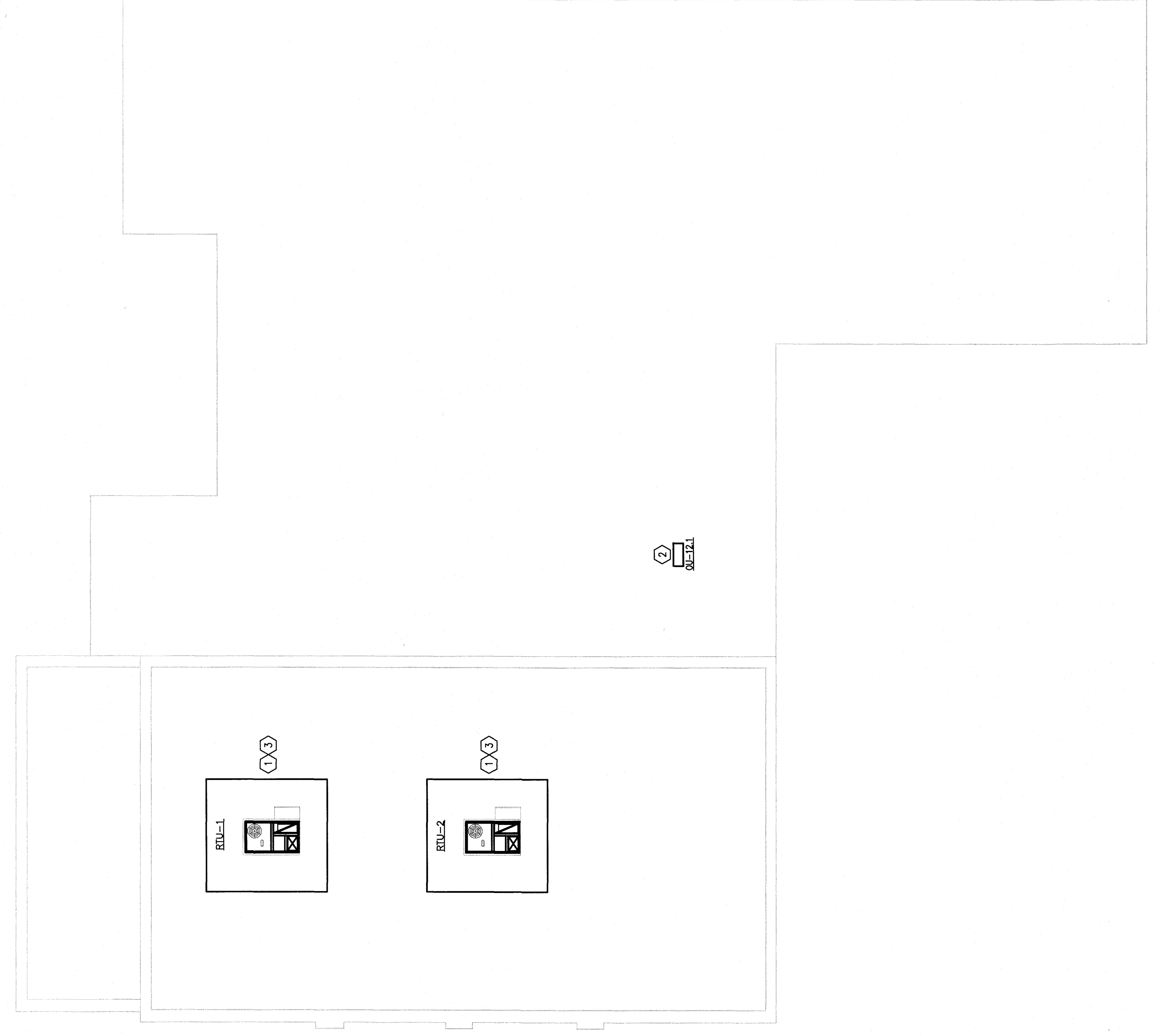
10411 Meeting Street
Louisville, KY 40059
T. 502.326.3085 F. 859.326.2691
postmaster@cmhlaegrs.com

ENERGY SOLUTIONS
cmhla

BOARD OFFICE
GUARANTEED ENERGY SAVINGS CONTRACT
MORGAN COUNTY BOARD OF EDUCATION
MORGAN COUNTY, WV
MECHANICAL ROOF PLAN

REVISIONS
A: REVISION
DATE: 3/17/2017
DRAWN BY:
CHECKED: JS/PMR
PROJECT: 224417
SET NO.

M2.1
BOARD OFFICE



GENERAL NOTES:

- A. ALL SITE SYSTEMS AND UNITS TO BE PROVIDED WITH UNIT POWERED CONDENSATE PUMP.
- B. REFER TO SHEET 180 FOR MECHANICAL LEGEND.
- C. ALL EQUIPMENT, WITH EXCEPTION OF ZONE DAMPERS, COILS, GRILLS, RESISTERS AND DIFFUSERS, TO BE PROVIDED BY OWNER, UNLESS OTHERWISE NOTED.

TAGGED NOTES:

- 1. COIL CONDENSATE TO ROOF IN DIRECTION OF ROOF DRAIN OR GUTTER.
- 2. OUTDOOR UNIT TO BE LOCATED A MINIMUM OF 10' FROM NEW ROOF TOP UNIT TO BE INSTALLED SO THAT SA & RA DUCTS ARE BETWEEN EXISTING ROOF JOISTS.