

10411 Meeting Street
Louisville, KY 40059
T 859 326.2691
postmaster@criticallc.com



WIDMYER ELEMENTARY SCHOOL
GUARANTEED ENERGY SAVINGS CONTRACT
MORGAN COUNTY BOARD OF EDUCATION
MORGAN COUNTY, WV

REVISIONS	
A: BEGING	

DATE: 3/12/207
DRAWN BY:
CHECKED BY: RWR
PROJECT: 22AWP

SET NO.

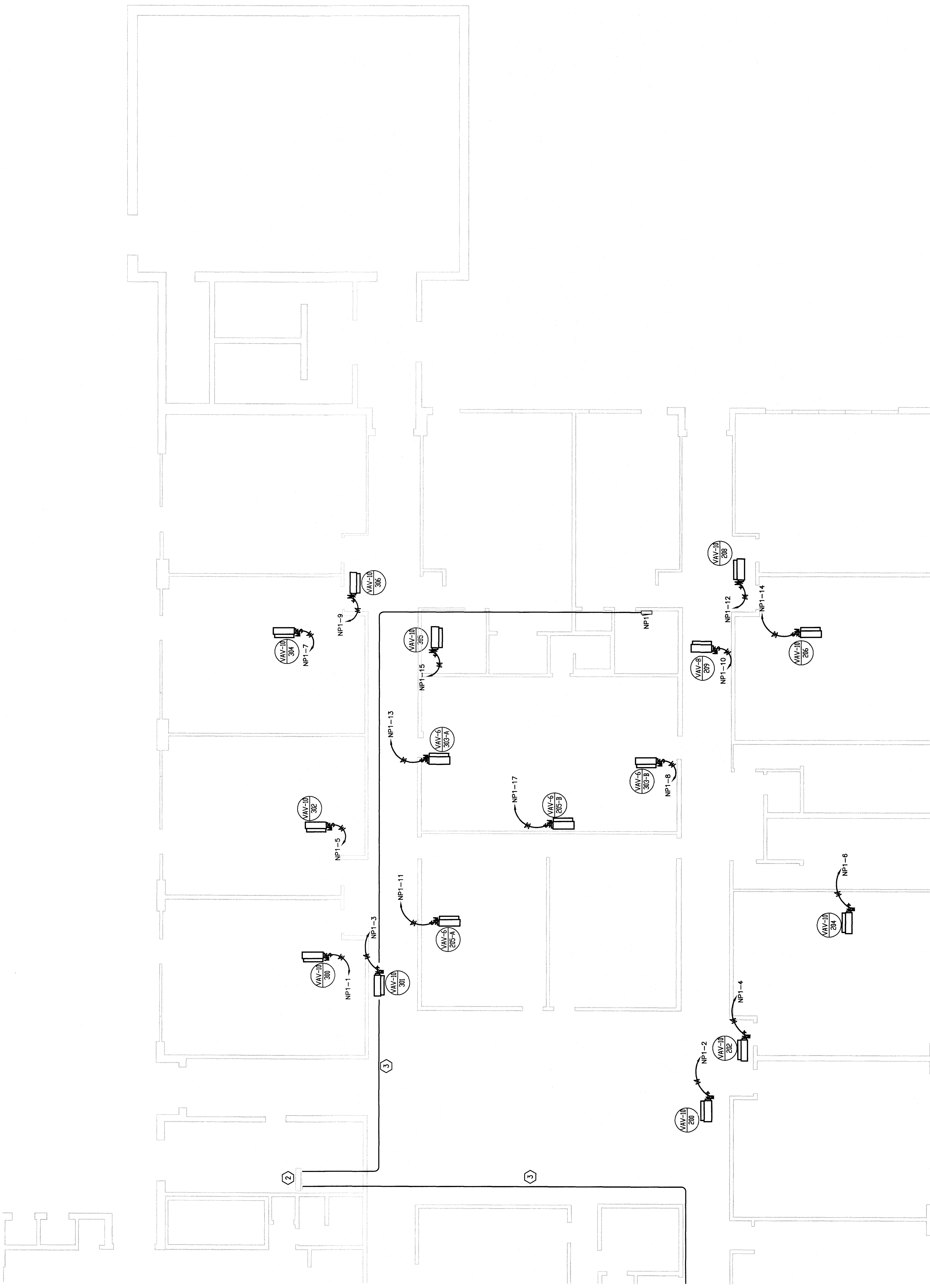
E2.1

WDMWR

- GENERAL ELECTRICAL NOTES:
- THICK DOTTED LINES INDICATE ITEMS FOR REMOVAL (U.S.N.). THIN SOLID LINES INDICATE EXISTING ITEMS TO REMAIN AND THICK SOLID LINES INDICATE NEW WORK.
 - THE CONTRACTOR SHALL MAINTAIN THE CONTINUITY OF EXISTING ELECTRICAL SYSTEMS UNLESS OTHERWISE NOTED. ITEMS TO BE DEMOLISHED SHALL BE DEMOLISHED IN ACCORDANCE WITH THE DEMOLITION SPECIFICATIONS. ALL ELECTRICAL EQUIPMENT "UPSTREAM" OR "DOWNSTREAM" ON THE CIRCUITS SHALL REMAIN IN "PRE-DEMOLITION" WORKING ORDER. LABELLED SWITCH BREAKERS SHALL BE REMOVED AND BE TYPEWRITTEN DIRECTORIES FOR ALL PANELS AFFECTED.
 - LOCATIONS OF DEVICES, CONNECTIONS, ETC., INDICATED ON THIS DRAWING WERE TAKEN FROM VARIOUS SOURCES. THEY HAVE BEEN VERIFIED BY VISUAL INSPECTION AND FIELD SURVEY FROM EXISTING CONDITIONS. CERTAIN EXISTING ELEMENTS ARE NOT SHOWN AS THEY ARE NOT PART OF THE WORK INDICATED HEREIN. THE CONTRACTOR SHALL VISIT THIS SITE AND DETERMINE TO HIS SATISFACTION THE ACCURACY OF THE INFORMATION AND WORK REQUIRED FOR THE BID WHICH HE PROPOSES.
 - PROVIDE BLANK COVER PLATES FOR ALL BOXES THAT HAVE DEVICES (SWITCHES, RECEPTACLES, ETC.) DEMOLISHED.
 - MAINTAIN EGRESS LIGHTING THROUGHOUT CONSTRUCTION PROCESS.
 - ALL TAGGED NOTES MAY NOT BE USED ON THIS SHEET.
 - WHERE SURFACE MOUNT CONDUITS/BOXES ARE DEMOLISHED AS PART OF THIS PROJECT.
 - CAREFULLY REMOVE CEILING TILES AS REQUIRED FOR DEMO AND NEW WORK. REPLACE AND DAMAGED CEILING TILES WITH NEW.
 - REFER TO BID FOR ADDITIONAL NOTES AND INFORMATION.

TAGGED NOTES:

- EXISTING FIRE ALARM CONTROL PANEL (MANUFACTURED BY EST).
- EXISTING SQUARE D SWITCHBOARDS, PROVIDE TWO (2) 200A/5P BREAKERS FOR NEW PANELBOARDS NP1 AND NP2.
- EXISTING 200A/5P BREAKERS TO BE DEMOLISHED TO MP1 AND NP2. REMOVE CONDUIT ABOVE NEW MP1 CEILING, PROVIDE PULL BOXES AS REQUIRED.



PANELBOARD AND WIRING SCHEDULE

PANELBOARD	LOAD	VOLTAGE	DESIGNATION	WIRE	BPM	COT	BPM	WIRE	DESIGNATION	LOAD			AGC
										A	B	C	
NP1	24.0	20.0	17.3	Sub-TOTAL	KVA					24.0	8.0	21.0	
													132.0