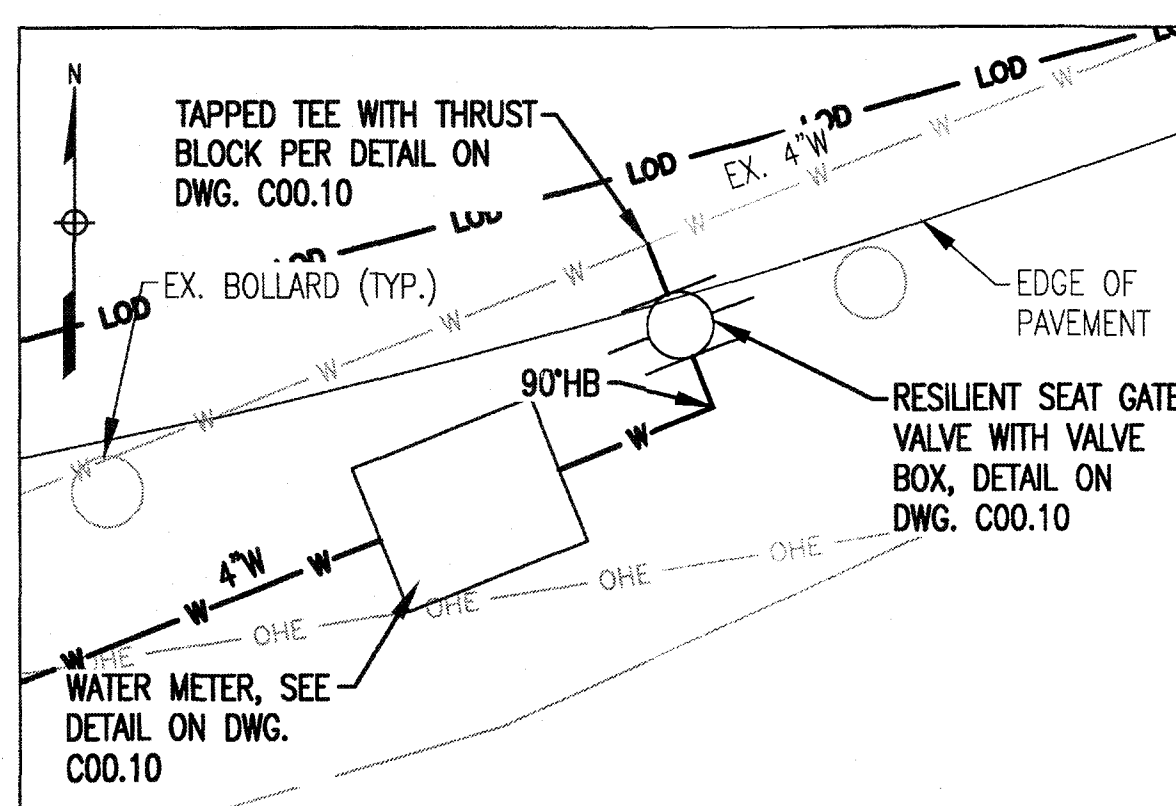
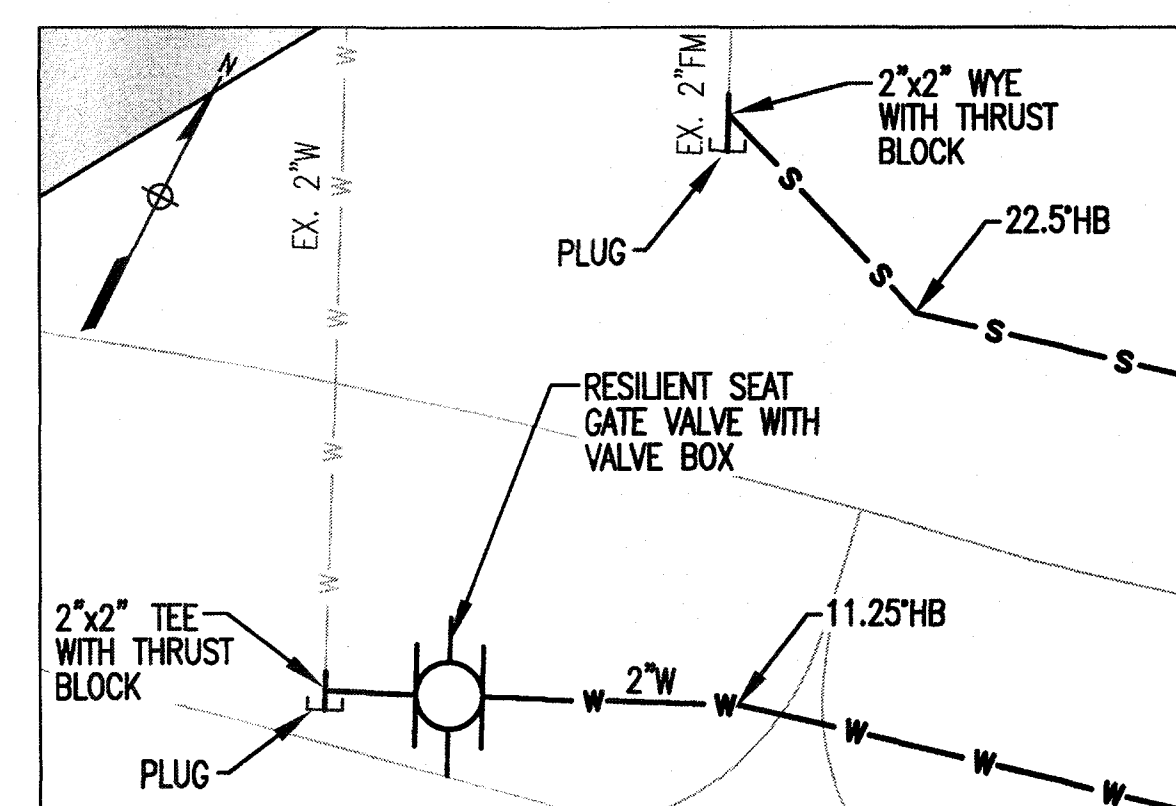


UTILITY PLAN
SCALE: 1" = 40'



A 4" WATER CONNECTION DETAIL
SCALE: 1" = 5'



B 2" WATER CONNECTION DETAIL
SCALE: 1" = 5'

NOTE: RESTRAIN ALL JOINTS

- (X) SPECIFIC NOTES:**
- ALL PRESSURE PIPE SHALL HAVE RESTRAINED JOINTS. SEE DWG. C00.09 FOR PROFILE.
 - SEE DWG. C00.08 FOR PROFILE.
 - SEE DWG. C00.09 FOR PROFILE.
 - PIPE SHALL HAVE RESTRAINED JOINTS. SEE DWG. C00.08 FOR PROFILE.
 - CONCRETE ENCASE WATER PER DETAIL ON C00.13 TO A MINIMUM OF 10 FEET ON EITHER SIDE OF SEWER AND/OR FORCEMAIN CROSSING.
 - SEE ELECTRICAL DRAWING E00.02 FOR ELECTRICAL SITE PLAN.
 - WATERLINES AND 2" FORCEMAIN SHALL HAVE A MINIMUM OF 3'-6" COVER AND A MAXIMUM OF 5'-0" COVER. UTILIZE THRUST RESTRAINT FOR 6" PIPE DIMENSION.
 - HANDBOX AND 2" BURIED CONDUIT FOR OVERFLOW CHAMBER FLOW SENSOR CABLES TO OVERFLOW CHAMBER REMOTE IO. SEE DWG. C03.01 FOR CONDUIT CONTINUATION AT CHAMBER AND INSTRUMENTATION DRAWINGS FOR BURIED CONDUIT REQUIREMENTS.

- DRAWING NOTES:**
- FOR DUCTBANK DETAILS REFER TO DWG. E00.02 AND E00.00.
 - EXISTING UTILITY RELOCATIONS SHALL BE PERFORMED PRIOR TO START OF CONSTRUCTION.
 - SEE G00.03 FOR OTHER APPLICABLE NOTES.



CITY OF CUMBERLAND MARYLAND

ENGINEERING DEPARTMENT

PROJECT TITLE

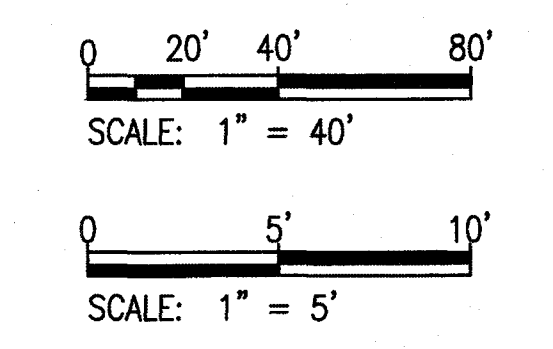
PHASE I
CSO STORAGE FACILITY AT THE
WASTEWATER TREATMENT PLANT



DRAWING TITLE

UTILITY PLAN

GRAPHIC SCALE



FOR LIST OF DRAWINGS SEE SHEET 2. FOR GENERAL LEGEND AND ABBREVIATIONS SEE SHEET 3 AND REFER TO NOTE 23.

REVISION	No.	DATE

REFERENCE DRAWING	No.

FIELD BOOK REF.	BOOK	PAGE

DESIGNED BY: ACM	SURVEYED BY:
DRAWN BY: ACM/GWG	FIELD BOOK No.:
CHECKED BY: MB	TRACED BY:

SCALE	HORIZONTAL: AS SHOWN
	VERTICAL:

DATE: JULY 2016 DWG.: C00.07

CITY PROJ. No. 01-10-WWTP SHEET 10 OF 136

CITY DRAWING REFERENCE NUMBER: C2509

PL 1986B-001 COUNTY 13860001 C00-07.dwg
 Aug 11, 2016 10:10 - 1:00pm



"PROFESSIONAL CERTIFICATION: I HEREBY CERTIFY THAT THESE DOCUMENTS WERE PREPARED OR APPROVED BY ME, AND THAT I AM A DULY LICENSED PROFESSIONAL ENGINEER UNDER THE LAWS OF THE STATE OF MARYLAND, LICENSE NO. 24478, EXPIRATION DATE: 10/28/2017."

8/10/16