

HVAC PLAN NOTES:

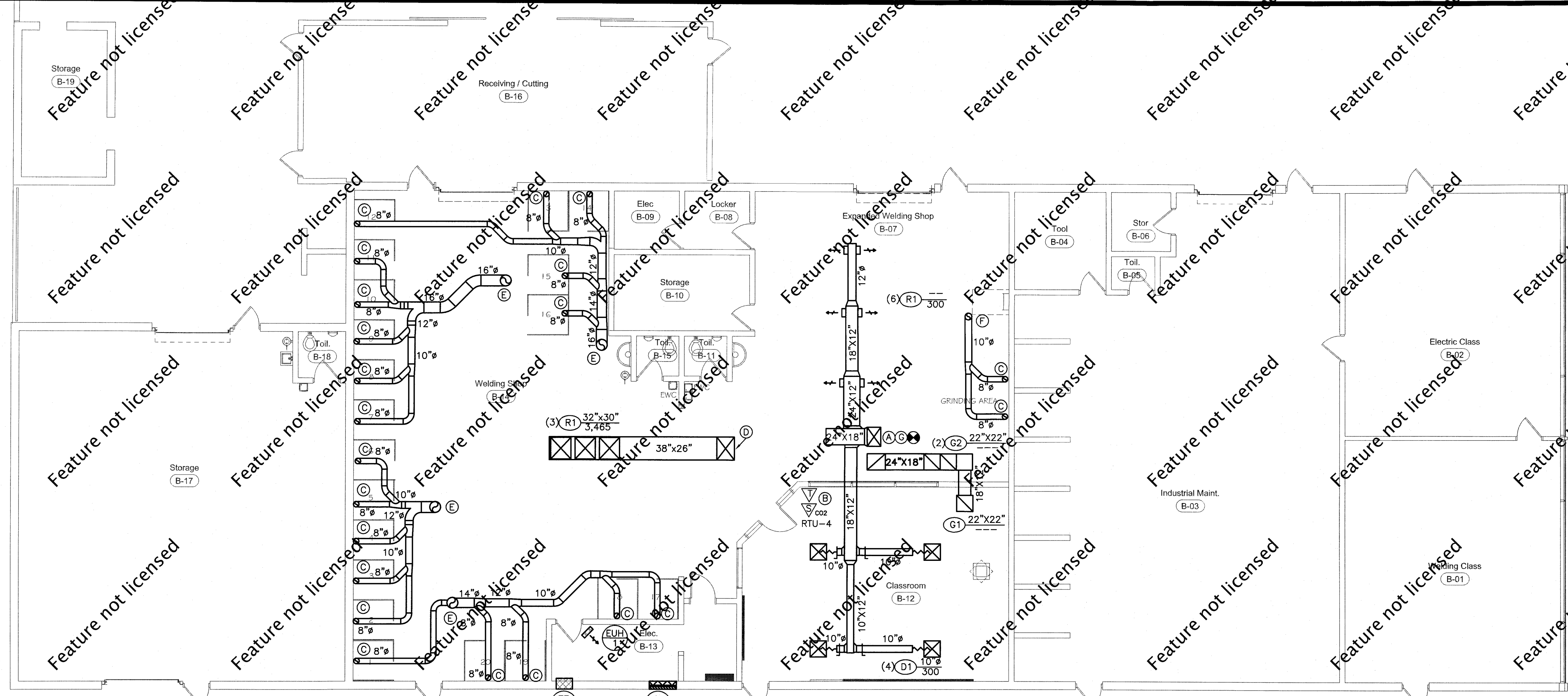
- (A) REMOVE CONCENTRIC VENT. TURN OVER TO OWNER. CONNECT TO EXISTING DUCTWORK. TRANSITION AS REQUIRED.
 - (B) RELOCATE THERMOSTAT AND CO2 SENSOR. EXTEND WIRE AS REQUIRED.
 - (C) 8" EXHAUST AIR DUCT DOWN TO CARMON FH WELDING HOOD OR EQUAL WITH BLAST GATE. NOMINAL 800 CFM. NOMINAL 60" WID. AS REQUIRED FOR OWNER PROVIDED BOOTH.
 - (D) 34"x26" SUPPLY AIR DUCT UP TO HV-1 ON ROOF. TRANSITION AS REQUIRED. COORDINATE EXACT LOCATION WITH EXISTING CONDITIONS.
 - (E) 16" EXHAUST DUCT THRU ROOF CURB TO FAN ON ROOF. COORDINATE EXACT LOCATION WITH EXISTING CONDITIONS. TRANSITION AS REQUIRED.
 - (F) 10" EXHAUST DUCT THRU ROOF CURB TO FAN ON ROOF. COORDINATE EXACT LOCATION WITH EXISTING CONDITIONS. TRANSITION AS REQUIRED.
- CONNECT TO EXISTING 20"x20" SUPPLY AIR DUCT AND 20"x20" RETURN AIR DUCT. TRANSITION AS REQUIRED.

NOTES:

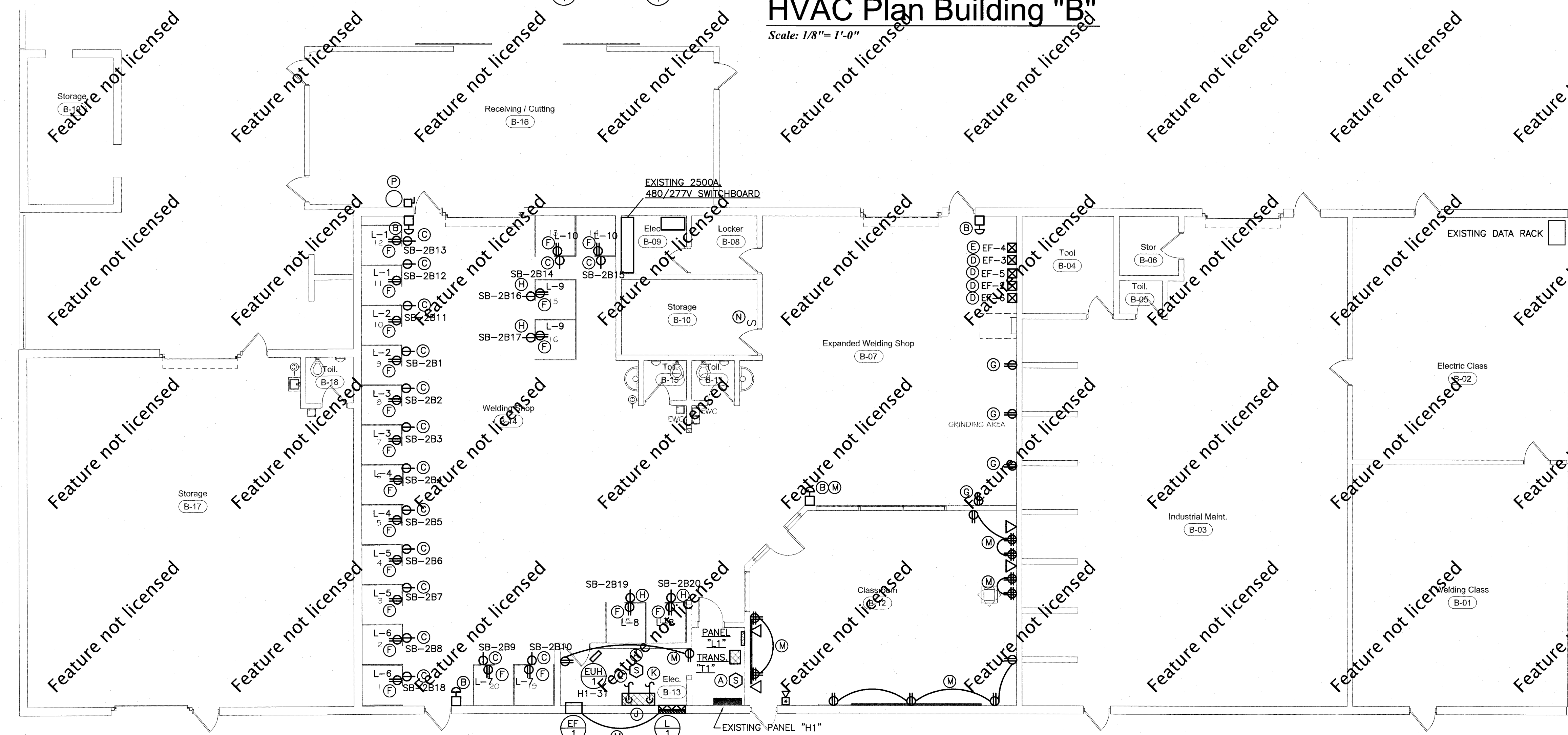
1. HOLD ALL DUCTWORK AS HIGH AS POSSIBLE.
2. FIELD VERIFY EXISTING CONDITIONS PRIOR TO BIDDING. RELOCATE CONDUIT, PIPE, DUCTS, ETC. AS REQUIRED. INSTALL NEW WORK. COORDINATE DUCT RUNS WITH EXISTING LIGHTS.

POWER PLAN NOTES:

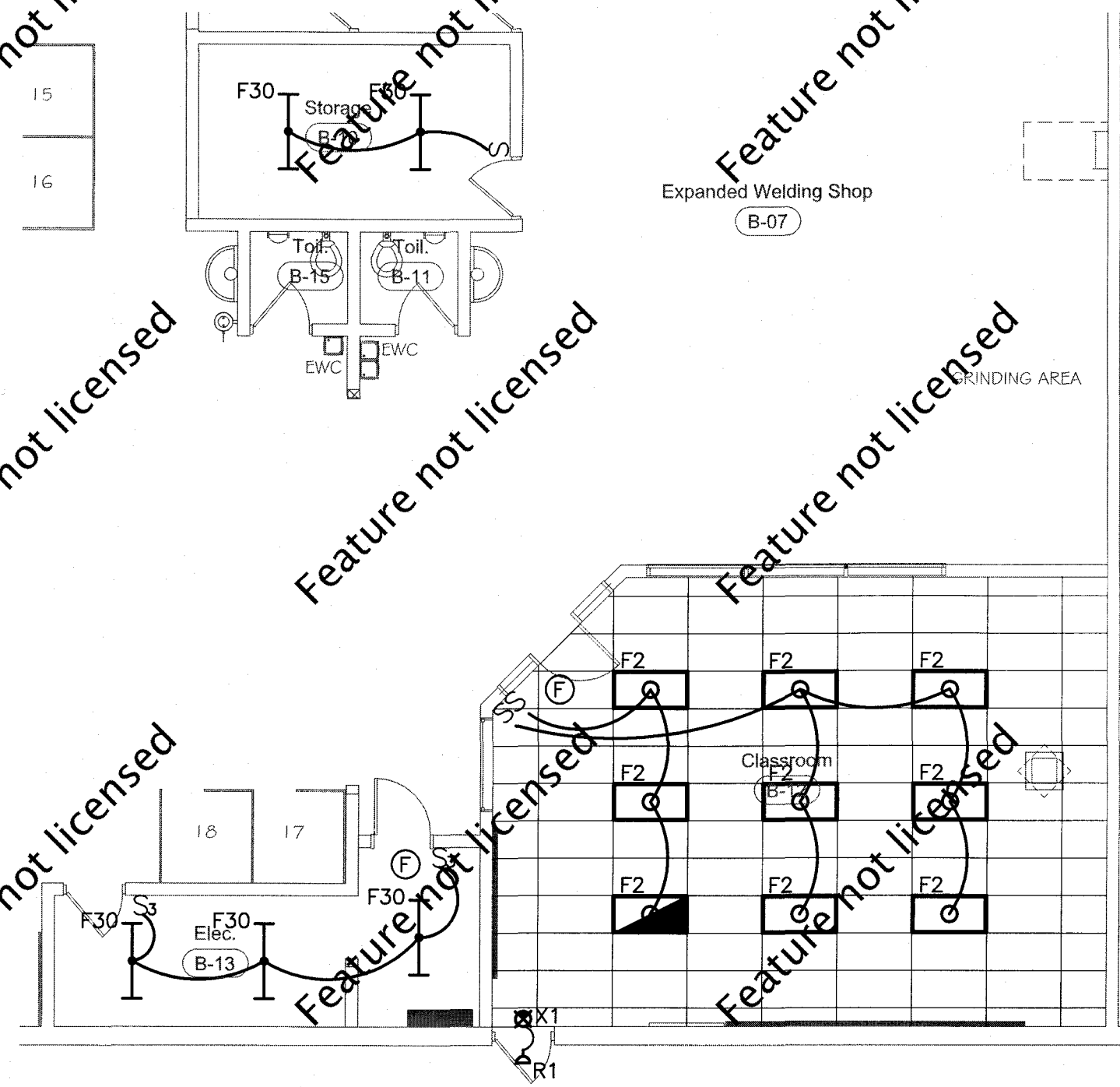
- (A) ADD SMOKE DETECTOR AND CONNECT TO EXISTING FIRE ALARM PANEL. EXISTING SYSTEM IS SIMPLEX.
- (B) EMERGENCY STOP BUTTON. SEE DETAIL ON SHEET me4. PROVIDE 120V POWER FROM PANEL "L1".
- (C) RECEPTACLE FOR WELDER. MOUNT TO WELDING BOOTH. COORDINATE REQUIREMENTS WITH OWNER SUPPLIED WELDER. PROVIDE NEW CABLE AND CONNECT TO EXISTING DISCONNECT ON BUSBAR WITH NEW FUSES.
- (D) NEMA SIZE 1, 480V/3Φ STARTER, NEAMA-1 ENCLOSURE WITH START/STOP PUSH BUTTON.
- (E) NEMA SIZE-1, 480V/3Φ STARTER, NEAMA-1 ENCLOSURE WITH START/STOP PUSH BUTTON.
- (F) MOUNT TO WELDING BOOTH. COORDINATE EXACT LOCATION WITH WELDING BOOTH.
- (G) RECEPTACLE FOR OWNER PROVIDED EQUIPMENT. COORDINATE AMPERAGE WITH EQUIPMENT. CIRCUIT FROM PANEL "L1".
- (H) RECEPTACLE FOR WELDER. MOUNT TO WELDING BOOTH. COORDINATE REQUIREMENTS WITH OWNER SUPPLIED WELDER. PROVIDE NEW CABLE AND NEW 100A DISCONNECT ON EXISTING BUS BAR. FIELD VERIFY LOCATION.
- (J) 800A ENCLOSURE SHUNT TRIP BREAKER. FIELD COORDINATE EXACT LOCATION.
- (K) 2-4" CONDUITS EACH WITH 3 #600-MCM AND #2 GROUND. INTERCEPT EXISTING BUS DUCT FEEDER WITH JUNCTION BOX AND EXTEND TO SHUNT TRIP BREAKER.
- (L) 2-4" CONDUITS EACH WITH 3-#600-MCM AND #2 GROUND. CONNECT TO EXISTING BUS DUCT.
- (M) CIRCUIT TO NEW 1P/20A BREAKER IN EXISTING SURFACE MOUNT PANEL CURRENTLY FEEDING "SMOKEEATER" EQUIPMENT.
- (N) EXISTING LIGHTING TO REMAIN IN THIS ROOM. EXTEND SWITCHING CIRCUIT TO PICK UP BOTH LIGHTS.
- (P) PROVIDE NEW DISCONNECT FOR EXISTING AIR COMPRESSOR. FIELD COORDINATE REQUIREMENTS. PROVIDE NEW CABLE AND NEW 100A DISCONNECT ON EXISTING BUS BAR. FIELD VERIFY LOCATION.



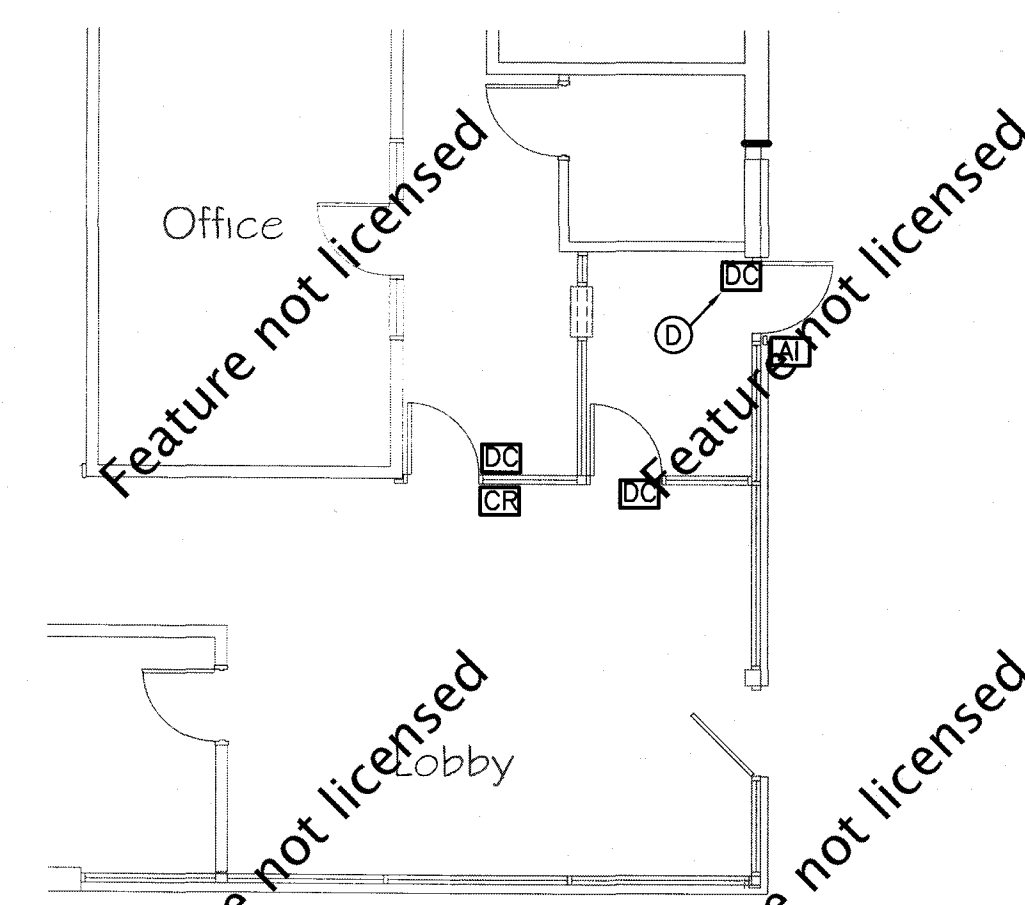
HVAC Plan Building "B"
Scale: 1/8" = 1'-0"



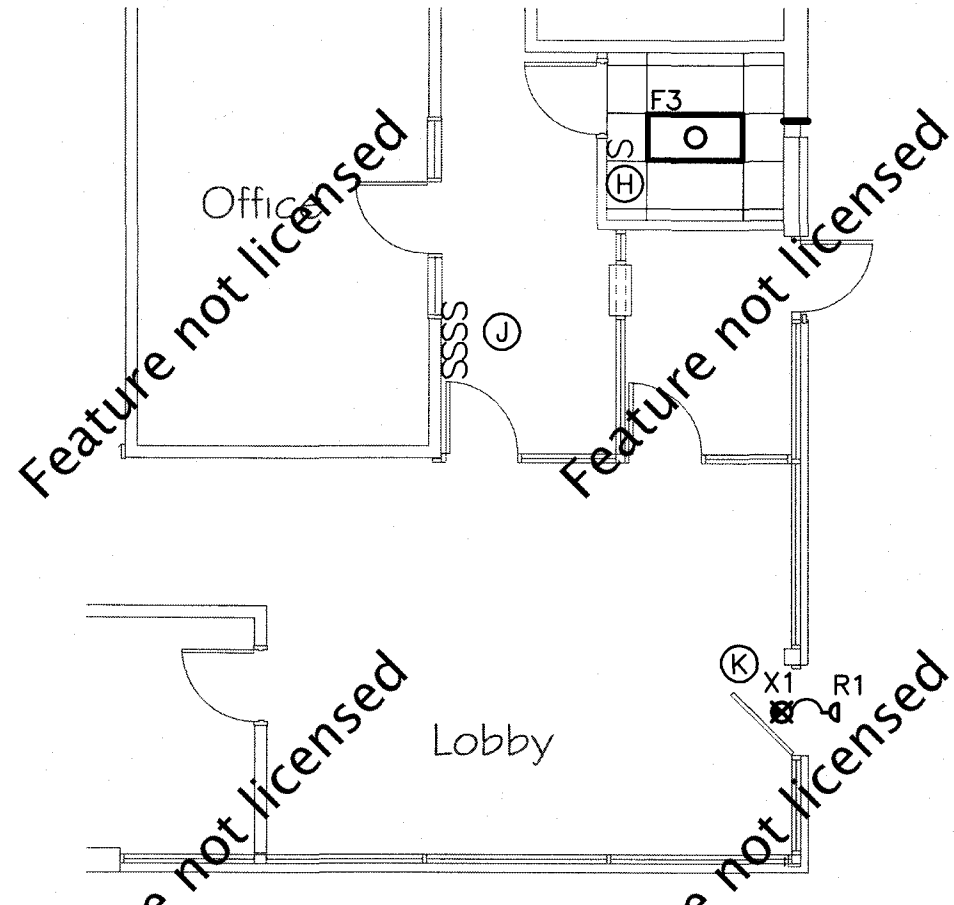
Power Plan Building "B"
Scale: 1/8" = 1'-0"



HVAC Plan Bldg. "C"
Scale: 1/8" = 1'-0"

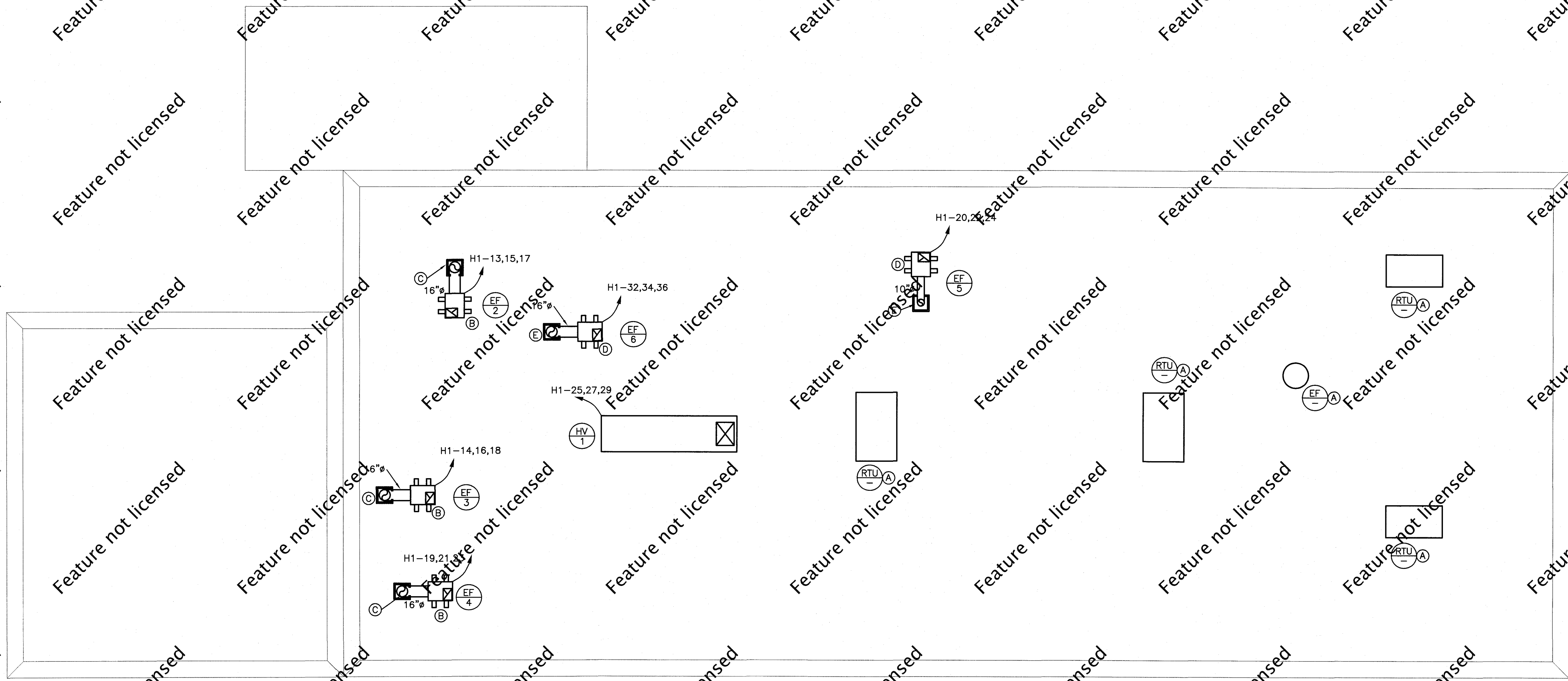


Systems Plan Bldg. "C"
Scale: 1/8" = 1'-0"



Lighting Plan Bldg. "C"
Scale: 1/8" = 1'-0"

Partial Lighting Plan Bld. "B"
Scale: 1/8" = 1'-0"



Mechanical/Electrical Roof Plan Bldg. "B"
Scale: 1/8" = 1'-0"

PLAN NOTES:

- (A) EXISTING TO REMAIN.
- (B) EXISTING EQUIPMENT RAILS. FIELD COORDINATE EXACT LOCATION.
- (C) EXISTING CURB FOR DUCT PENETRATION. FIELD COORDINATE EXACT LOCATION.
- (D) PROVIDE 18" TALL EQUIPMENT RAILS. FIELD COORDINATE EXACT LOCATION.
- (E) PROVIDE 18" TALL ROOF CURB FOR DUCT PENETRATION THRU ROOF.
- (F) CIRCUIT TO NEW 1P 20A BREAKER IN EXISTING SURFACE. MOUNT PANEL CURRENTLY FEEDING "SMOKEEATER" EQUIPMENT.
- (G) 6"Ø SUPPLY AIR DUCT WITH BALANCE DAMPER AND FLEX CONNECTION TO DIFFUSER. TAP NEAREST SUPPLY MAIN.
- (H) CIRCUIT TO NEAREST LIGHTING CIRCUIT.
- (I) RELOCATE SWITCHES FROM WALL DEMOLISHED FOR INSTALLATION OF NEW DOOR AND GLAZING.
- (J) CONNECT TO EXISTING CIRCUIT.
- (K) CONNECT TO EXISTING PANEL. INSTALL 1P 20 A BREAKER. PROVIDE 3/4" CONDUIT WITH 2#12 & #12 GND. SEE SHEET me5 FOR PANEL LOCATION.



717 Bigley Avenue
Charleston, WV 25302
304.345.1060 f 304.345.3693
www.wsgarch.com



p.304.722.3602
f.304.722.3603



drawn by STAFF
checked by JEH
date 06/12/15
comm # 2014-042

**Mechanical and
Electrical Plans
Building "B" and "C"**

me2

Construction Documents

© 2015 Williamson Shriver Architects, Inc.