



2429 Members Way
Lexington, KY 40504
T 859.263.0892 F 859.231.8357
postmaster@cmtra.com



BERKELEY COUNTY SCHOOLS
WINCHESTER AVENUE ELEMENTARY
650 WINCHESTER AVENUE
MARTINSBURG, WEST VIRGINIA

LIGHTING PLAN

REVISIONS

DATE 12/23/2015
DRAWN BY DB
CHECKED BY BWR

SET NO.

E1.0
WINCH AV EL

BID DOCUMENTS

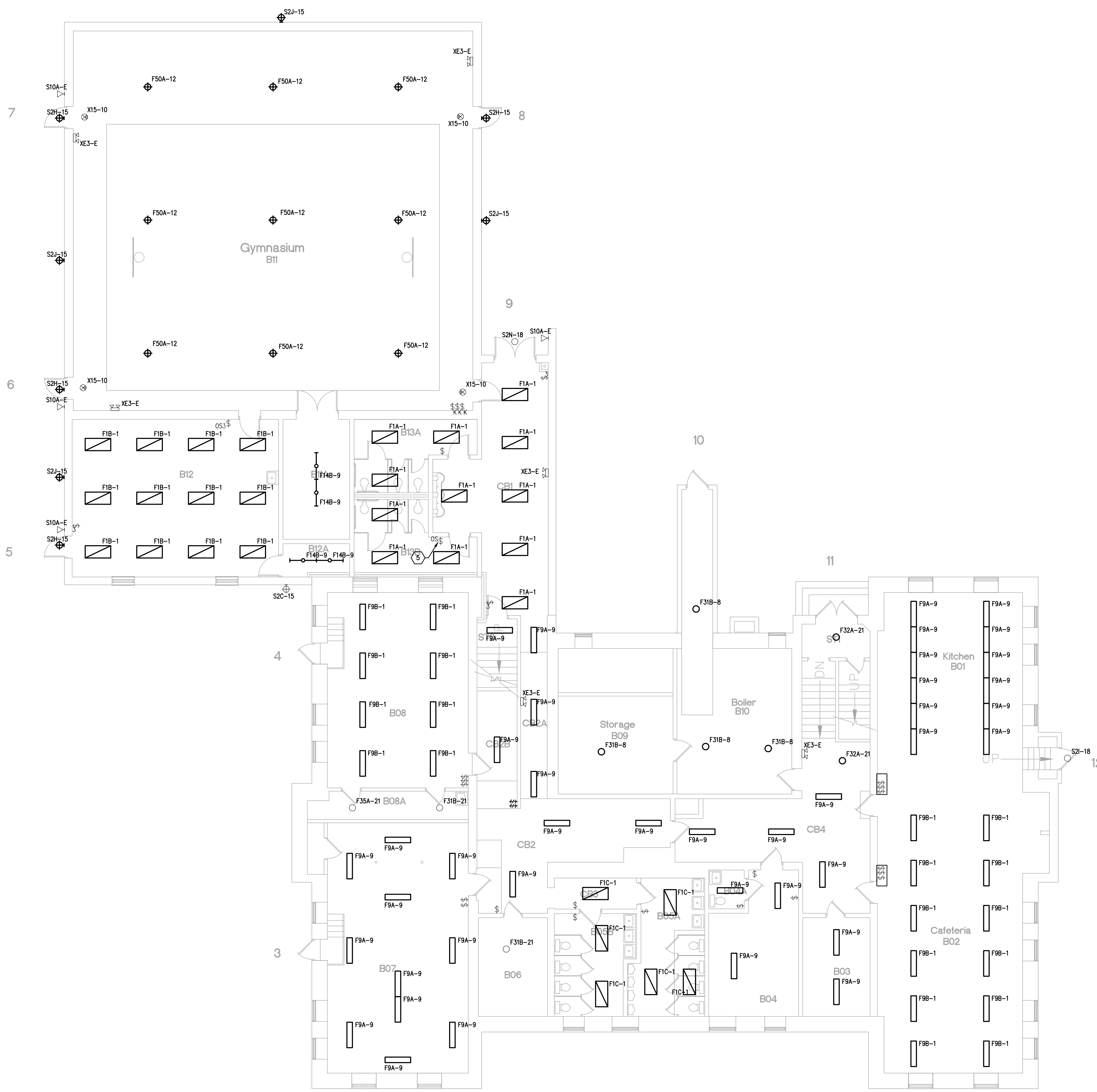
GENERAL NOTES:

- A. NEW LIGHT FIXTURES AND LAMPS TO BE PROVIDED BY CMTA.
- B. NEW OCCUPANCY SENSORS, POWER PACK/RELAYS, WIRING, CONDUIT, SWITCHES, ETC TO BE PROVIDED BY ELECTRICAL CONTRACTOR.
- C. WHERE NEW LED TUBES ARE TO BE INSTALLED, CONTRACTOR SHALL REMOVE AND DISPOSE OF EXISTING BALLAST, TOMBSTONES, ETC. AND INSTALL NEW NON SHUNTED TOMBSTONES AND LAMPS (PROVIDED BY CMTA) AS REQUIRED.
- D. ALL OCCUPANCY SENSORS INDICATED AT CLASSROOMS AND SIMILAR INSTRUCTIONAL SPACES SHALL BE INCLUDED AS AN ADD ALTERNATE TO THE BASE BID. (THIS PRICING TO INCLUDE ALL MATERIALS, LABOR, ETC. REQUIRED FOR THESE SENSORS.) SENSORS INDICATED AT OTHER SPACES (CORRIDORS, ADMIN, AREAS, OFFICES, ETC.) TO REMAIN IN BASE BID.
- E. THICK DASHED LINES INDICATE ITEMS FOR REMOVAL (U.O.N.). THIN SOLID LINES INDICATE EXISTING ITEMS TO REMAIN AND THICK SOLID LINES INDICATE NEW WORK.
- F. THE CONTRACTOR SHALL MAINTAIN THE CONTINUITY OF EXISTING CIRCUITS THAT CONTAIN DEVICES OR EQUIPMENT THAT ARE TO REMAIN. WHEN DEMOLITION OF AN ELECTRICAL DEVICE (OR CIRCUIT) IS INDICATED ON THE DRAWINGS; THE CONTRACTOR SHALL INSURE THAT OTHER DEVICES OR EQUIPMENT "UPSTREAM" OR "DOWNSTREAM" ON THE CIRCUITS SHALL REMAIN IN "PRE-DEMOLITION" WORKING ORDER. "LEFT-OVER" CIRCUIT BREAKERS SHALL REMAIN AND BE LABELLED AS SPARES IN THEIR PANELS. PROVIDE NEW TYPED DIRECTORIES FOR ALL PANELS AFFECTED.
- G. LOCATIONS OF DEVICES, CONNECTIONS, ETC., INDICATED ON THIS DRAWING WERE TAKEN FROM VARIOUS SOURCES. THEY ARE DIAGRAMMATIC ONLY AND ARE SUBJECT TO VARIATION FROM EXISTING CONDITIONS. CERTAIN EXISTING ELEMENTS MAY NOT BE INDICATED AT ALL. THE CONTRACTOR PROPOSING TO DO ANY PART OF THE WORK INDICATED HEREON SHALL VISIT THIS SITE AND DETERMINE TO HIS SATISFACTION THAT THEY MAY COMPLETE ALL WORK REQUIRED FOR THE BID WHICH HE PROPOSES.
- H. REMOVE ALL ASSOCIATED CONDUIT AND CONDUCTORS FOR DEVICES / FIXTURES / ETC. BEING REMOVED (BACK TO SOURCE), WHETHER INDICATED OR NOT (U.O.N.).
- I. COORDINATE DISPOSAL OF ALL FIXTURES, DEVICES, ETC. (INDICATED FOR DEMOLITION) WITH OWNER.
- J. PROVIDE BLANK COVER PLATES FOR ALL BOXES THAT HAVE DEVICES (SWITCHES, RECEPTACLES, ETC) DEMOLISHED.
- K. REFER TO HVAC AND PLUMBING DEMOLITION PLANS, REMOVE ELECTRICAL CIRCUITS SERVING ALL EQUIPMENT TO BE DEMOLISHED. PATCH WALLS AND FLOORS WHERE CONDUITS SERVING EQUIPMENT LEAVE VOIDS.

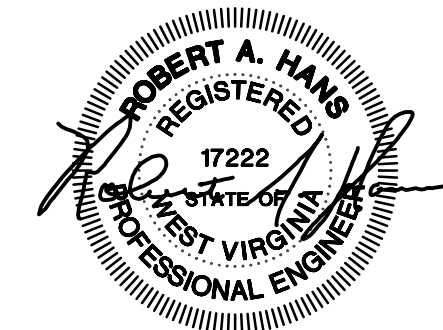
TAGGED NOTES

- 1. SERVE NEW LIGHTING FROM EXISTING EXISTING LIGHTING CIRCUIT IN THE SPACE. ROUTE UNSWITCHED HOT THROUGH NEW FIXTURE MOUNTED OCCUPANCY SENSOR(S) AND LOCAL SWITCH(ES) (BOTH EXISTING AND NEW SWITCHES). THEN TO FIXTURES. CONTRACTOR SHALL LOCATE SENSOR AT BEGINNING OF CIRCUIT TO ALLOW FOR ALL FIXTURES IN THE SPACE TO BE CONTROLLED. REFER TO TYPICAL CEILING MOUNTED LINE VOLTAGE OCCUPANCY SENSOR DIAGRAM ON SHEET E0.0 FOR ADDITIONAL INFORMATION.
- 2. SERVE NEW LIGHTING FROM EXISTING EXISTING LIGHTING CIRCUIT IN THE SPACE. ROUTE UNSWITCHED HOT THROUGH NEW OCCUPANCY SENSOR(S) AND LOCAL SWITCH(ES) (BOTH EXISTING AND NEW SWITCHES). THEN TO FIXTURES. UTILIZE #12AWG CONDUCTORS IN CONDUIT (MC CABLE AT CONTRACTORS DISCRETION). REFER TO TYPICAL CEILING MOUNTED LINE VOLTAGE OCCUPANCY SENSOR DIAGRAM ON SHEET E0.0 FOR ADDITIONAL INFORMATION.
- 3. SERVE NEW LIGHTING FROM EXISTING LIGHTING CIRCUIT IN THE SPACE. ROUTE UNSWITCHED HOT THROUGH OCCUPANCY SENSOR SWITCH, THEN TO FIXTURES. PROVIDE NEW OCCUPANCY SENSOR SWITCH OR REPLACE EXISTING MANUAL SWITCH WITH OCCUPANCY SENSOR SWITCH WHEN EXISTING SWITCH IS PRESENT. PROVIDE 2 POLE OCCUPANCY SENSOR WHEN 2 SWITCHES ARE PRESENT.

CLASSROOM OCCUPANCY SENSOR ADD ALTERNATE:
PROVIDE AN ADDITIVE BID ALTERNATE FOR ALL OCCUPANCY SENSORS SHOWN IN CLASSROOM TYPE SPACES. THE CLASSROOM SENSORS ARE THE ONES SHOWN (AND OR TAG NOTED) IN THE CEILINGS OR MOUNTED TO THE FIXTURES. THE ALTERNATE PRICE SHALL INCLUDE ALL REQUIRED BOXES, CONDUIT, ETC FOR A COMPLETE SYSTEM INSTALLATION.



PLAN NORTH
EXISTING LIGHTING - BASEMENT PLAN
SCALE: 1/8" = 1'-0"
0 1' 2' 4' 8' 16' 24' 32'

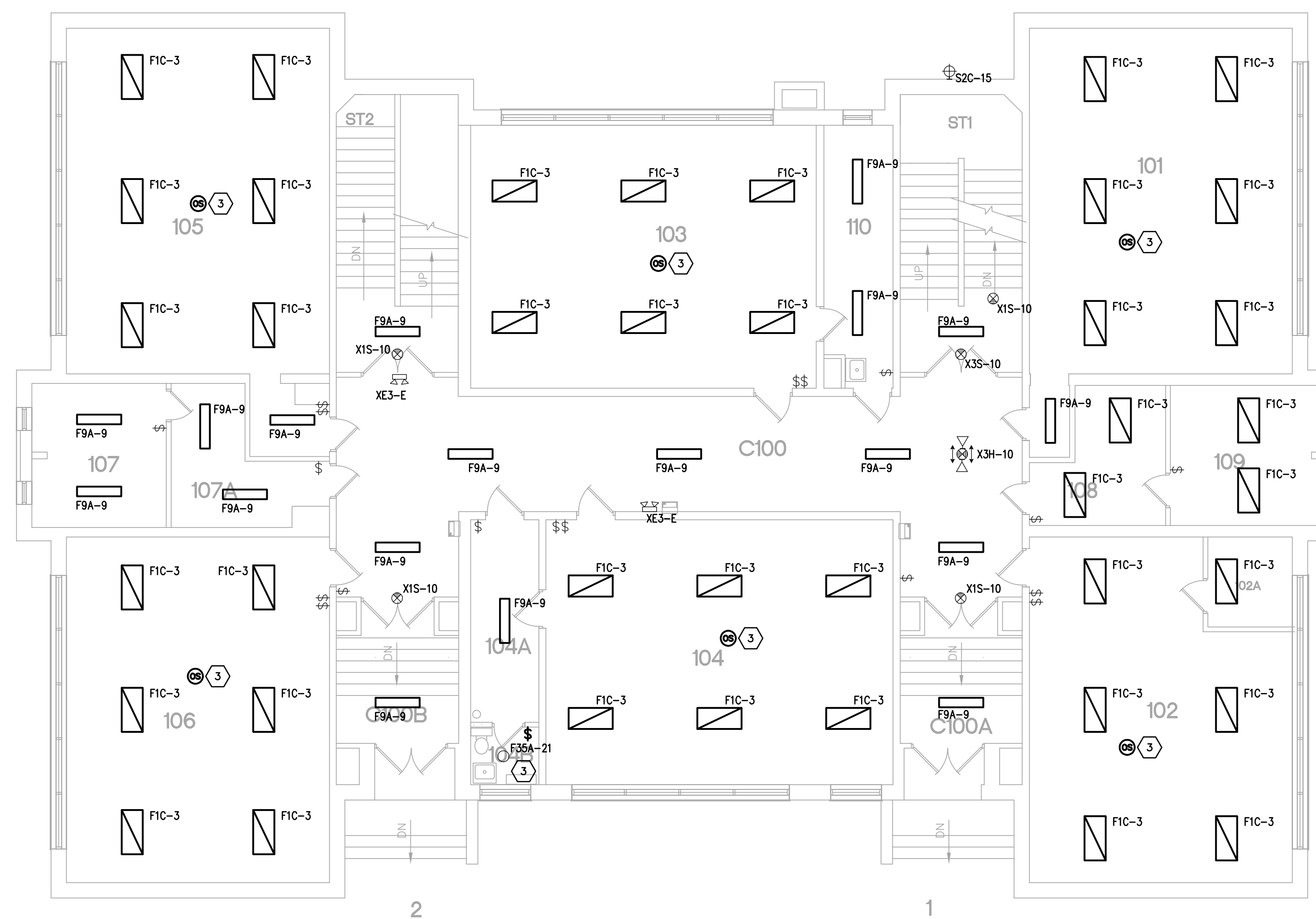


2429 Members Way
Lexington, KY 40504
T 859.263.0892 F 859.231.8357
postmaster@cmtaengr.com



**BERKELEY COUNTY SCHOOLS
WINCHESTER AVENUE ELEMENTARY
650 WINCHESTER AVENUE
MARTINSBURG, WEST VIRGINIA**

LIGHTING PLAN



PLAN NORTH
EXISTING LIGHTING - FIRST FLOOR PLAN
SCALE: 1/8" = 1'-0"
0 1 2 4 8 16 24 32



PLAN NORTH
EXISTING LIGHTING - SECOND FLOOR PLAN
SCALE: 1/8" = 1'-0"
0 1 2 4 8 16 24 32

GENERAL NOTES:

- NEW LIGHT FIXTURES AND LAMPS TO BE PROVIDED BY CMTA.
- NEW OCCUPANCY SENSORS, POWER PACK/RELAYS, WIRING, CONDUIT, SWITCHES, ETC TO BE PROVIDED BY ELECTRICAL CONTRACTOR.
- WHERE NEW LED TUBES ARE TO BE INSTALLED, CONTRACTOR SHALL REMOVE AND DISPOSE OF EXISTING BALLAST, TOMBSTONES, ETC. AND INSTALL NEW NON SHUNTED TOMBSTONES AND LAMPS (PROVIDED BY CMTA) AS REQUIRED.
- ALL OCCUPANCY SENSORS INDICATED AT CLASSROOMS AND SIMILAR INSTRUCTIONAL SPACES SHALL BE INCLUDED AS AN ADD ALTERNATE TO THE BASE BID. (THIS PRICING TO INCLUDE ALL MATERIALS, LABOR, ETC. REQUIRED FOR THESE SENSORS.) SENSORS INDICATED AT OTHER SPACES (CORRIDORS, ADMIN. AREAS, OFFICES, ETC.) TO REMAIN IN BASE BID.
- THICK DASHED LINES INDICATE ITEMS FOR REMOVAL (U.O.N.), THIN SOLID LINES INDICATE EXISTING ITEMS TO REMAIN AND THICK SOLID LINES INDICATE NEW WORK.
- THE CONTRACTOR SHALL MAINTAIN THE CONTINUITY OF EXISTING CIRCUITS THAT CONTAIN DEVICES OR EQUIPMENT THAT ARE TO REMAIN. WHEN DEMOLITION OF AN ELECTRICAL DEVICE (OR CIRCUIT) IS INDICATED ON THE DRAWINGS: THE CONTRACTOR SHALL INSURE THAT OTHER DEVICES OR EQUIPMENT "UPSTREAM" OR "DOWNSTREAM" ON THE CIRCUITS SHALL REMAIN IN "PRE-DEMOLITION" WORKING ORDER. "LEFT-OVER" CIRCUIT BREAKERS SHALL REMAIN AND BE LABELLED AS SPARES IN THEIR PANELS. PROVIDE NEW TYPEWRITEN DIRECTORIES FOR ALL PANELS AFFECTED.
- LOCATIONS OF DEVICES, CONNECTIONS, ETC., INDICATED ON THIS DRAWING WERE TAKEN FROM VARIOUS SOURCES. THEY ARE DIAGRAMMATIC ONLY AND ARE SUBJECT TO VARIATION FROM EXISTING CONDITIONS. CERTAIN EXISTING ELEMENTS MAY NOT BE INDICATED AT ALL. THE CONTRACTOR PROPOSING TO DO ANY PART OF THE WORK INDICATED HEREON SHALL VISIT THIS SITE AND DETERMINE TO HIS SATISFACTION THAT THEY MAY COMPLETE ALL WORK REQUIRED FOR THE BID WHICH HE PROPOSES.
- REMOVE ALL ASSOCIATED CONDUIT AND CONDUCTORS FOR DEVICES / FIXTURES / ETC. BEING REMOVED (BACK TO SOURCE), WHETHER INDICATED OR NOT (U.O.N.).
- COORDINATE DISPOSAL OF ALL FIXTURES, DEVICES, ETC. (INDICATED FOR DEMOLITION) WITH OWNER.
- PROVIDE BLANK COVER PLATES FOR ALL BOXES THAT HAVE DEVICES (SWITCHES, RECEPTACLES, ETC) DEMOLISHED.
- REFER TO HVAC AND PLUMBING DEMOLITION PLANS. REMOVE ELECTRICAL CIRCUITS SERVING ALL EQUIPMENT TO BE DEMOLISHED. PATCH WALLS AND FLOORS WHERE CONDUITS SERVING EQUIPMENT LEAVE VOIDS.

TAGGED NOTES:

- SERVE NEW LIGHTING FROM EXISTING EXISTING LIGHTING CIRCUIT IN THE SPACE. ROUTE UNSWITCHED HOT THROUGH NEW FIXTURE MOUNTED OCCUPANCY SENSOR(S) AND LOCAL SWITCH(ES) (BOTH EXISTING AND NEW SWITCHES), THEN TO FIXTURES. CONTRACTOR SHALL LOCATE SENSOR AT BEGINNING OF CIRCUIT TO ALLOW FOR ALL FIXTURES IN THE SPACE TO BE CONTROLLED. REFER TO TYPICAL CEILING MOUNTED LINE VOLTAGE OCCUPANCY SENSOR DIAGRAM ON SHEET E0.0 FOR ADDITIONAL INFORMATION.
- SERVE NEW LIGHTING FROM EXISTING EXISTING LIGHTING CIRCUIT IN THE SPACE. ROUTE UNSWITCHED HOT THROUGH NEW OCCUPANCY SENSOR(S) AND LOCAL SWITCH(ES) (BOTH EXISTING AND NEW SWITCHES), THEN TO FIXTURES. UTILIZE #12AWG CONDUCTORS IN CONDUIT (MC CABLE AT CONTRACTORS DISCRETION). REFER TO TYPICAL CEILING MOUNTED LINE VOLTAGE OCCUPANCY SENSOR DIAGRAM ON SHEET E0.0 FOR ADDITIONAL INFORMATION.
- SERVE NEW LIGHTING FROM EXISTING EXISTING LIGHTING CIRCUIT IN THE SPACE. ROUTE UNSWITCHED HOT THROUGH OCCUPANCY SENSOR SWITCH, THEN TO FIXTURES. PROVIDE NEW OCCUPANCY SENSOR SWITCH OR REPLACE EXISTING MANUAL SWITCH WITH OCCUPANCY SENSOR SWITCH WHEN EXISTING SWITCH IS PRESENT. PROVIDE 2 POLE OCCUPANCY SENSOR WHEN 2 SWITCHES ARE PRESENT.

CLASSROOM OCCUPANCY SENSOR ADD ALTERNATE:
PROVIDE AN ADDITIVE BID ALTERNATE FOR ALL OCCUPANCY SENSORS SHOWN IN CLASSROOM TYPE SPACES. THE CLASSROOM SENSORS ARE THE ONES SHOWN (AND OR TAG NOTED) IN THE CEILING OR MOUNTED TO THE FIXTURES. THE ALTERNATE PRICE SHALL INCLUDE ALL REQUIRED, BOXES, CONDUIT, ETC FOR A COMPLETE SYSTEM INSTALLATION.

REVISIONS	

DATE 12/23/2015
DRAWN BY DB
CHECKED BY BWR

SET NO.

E1.1
WINCH AV EL

FILENAME: P:\ARCH\BERKELEY\151110 - WINCHESTER AV ELEMENTARY
DATE PLOT: 12/23/2015 10:13:10 PM
PLOT BY: BWA

BID DOCUMENTS